



**Sunlite Suite 2**

SUNLITE is a trademark of Bruno Nicolaudie.

WINDOWS is a trademark of the MICROSOFT CORPORATION.

All rights reserved. No parts of this work may be reproduced in any form or by any means - graphic, electronic, or mechanical, including photocopying, recording, taping, or information storage and retrieval systems - without the written permission of the publisher.

Products that are referred to in this document may be either trademarks and/or registered trademarks of the respective owners. The publisher and the author make no claim to these trademarks.

While every precaution has been taken in the preparation of this document, the publisher and the author assume no responsibility for errors or omissions, or for damages resulting from the use of information contained in this document or from the use of programs and source code that may accompany it. In no event shall the publisher and the author be liable for any loss of profit or any other commercial damage caused or alleged to have been caused directly or indirectly by this document.

© 1989-2006 Nicolaudie

# Table of contents

<b><i>I Before We Start</i></b>	<b><i>1</i></b>
1. What's New to Suite 2	2
2. The Sunlite Package	7
3. Software & Hardware Installation	10
4. Fixture Profiles	11
<b><i>II Quick Start</i></b>	<b><i>13</i></b>
1. Creating your first show	12
2. Creating your first Scene	16
3. Editing a scene with EasyStep	18
4. Editing a Scene with EasyTime	20
<b><i>III Programming</i></b>	<b><i>24</i></b>
1. Show Structure	23
2. Creating The MASTER Page	24
3. Creating Cycles	26
4. Button Editor	28
5. Arranging Buttons	31
6. Button Dials	34
7. Scene Fading	37
8. Palettes	38
9. Palette Types (advanced)	40
<b><i>IV EasyTime Effects</i></b>	<b><i>44</i></b>
1. ConstantLevel	43
2. Gradient	44
3. Curve	45
4. Color	45
5. X/Y	46
6. Matrix	47
7. Picture	47
8. Gif	48
9. Video	48
10. Text	49
11. Color Manager	50
12. EasyTime Phasing	51
<b><i>V Dealing with Fixtures</i></b>	<b><i>53</i></b>
1. Groups	52
2. Rects	54

3. Live Control with Groups	56
4. Advanced Positioning	57
5. Advanced Patching	58
6. Multiple Universes	60
7. Printing a Patch	61

<b><i>VI External Control &amp; Triggering</i></b>	<b>63</b>
--	-----------

1. Keyboard	62
2. Date & Time	63
3. Console (MIDI, DMX, EasyRemote)	64
4. DMX	68
5. Interface Ports	69
6. MIDI Time Code (MTC)	71
7. Audio	72
8. OLED Keypad	74

<b><i>VII Other Features</i></b>	<b>77</b>
----------------------------------	-----------

1. Access Privileges	76
2. Favourites	77
3. Multimedia	78
4. Stand Alone	79

<b><i>VIII Easy Show</i></b>	<b>83</b>
------------------------------	-----------

1. Getting Started	82
2. Creating Timelines Manually	84
3. Timeline Options	84
4. Other Options	85
5. Triggering	86
6. Synchronization Options	87

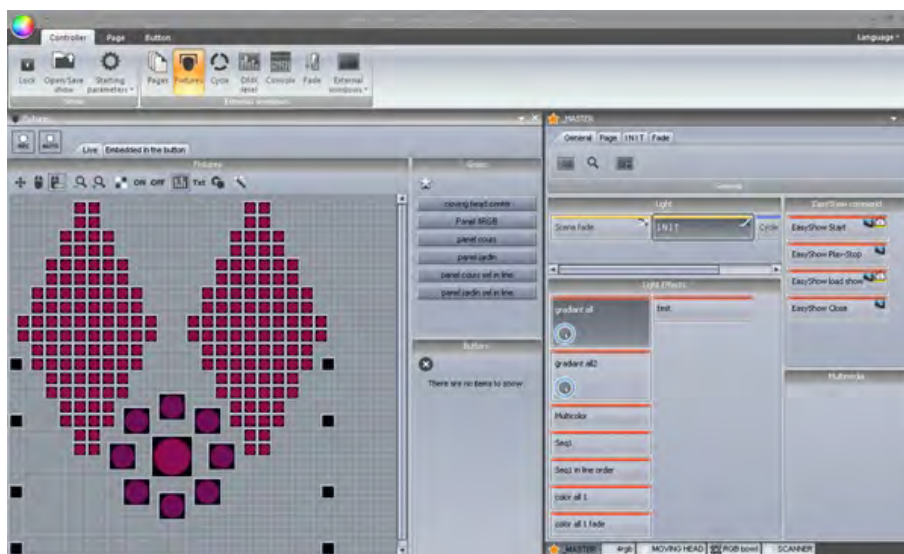
<b><i>IX Other Software</i></b>	<b>90</b>
---------------------------------	-----------

1. Console Editor	89
2. 3D Visualiser	90
3. Scan Library Editor	91

# I Before We Start

## Welcome

Welcome to Sunlite Suite 2! You are probably eager to get straight on with your programming and see what Suite 2 is capable of doing so we have made the first two chapters short and simple. The aim of the first chapter is to prepare you for using the software. The second heading explains the foundations of the software. If you are completely new to Sunlite Suite or lighting programming, the first two headings should be enough to get you started. There are a set of video tutorials which have been written alongside this manual, you can find these at <http://www.nicolaudie.com/nicolaudietv>



## Checklist

Before starting, make sure you have all the required tools. You should have a package with:

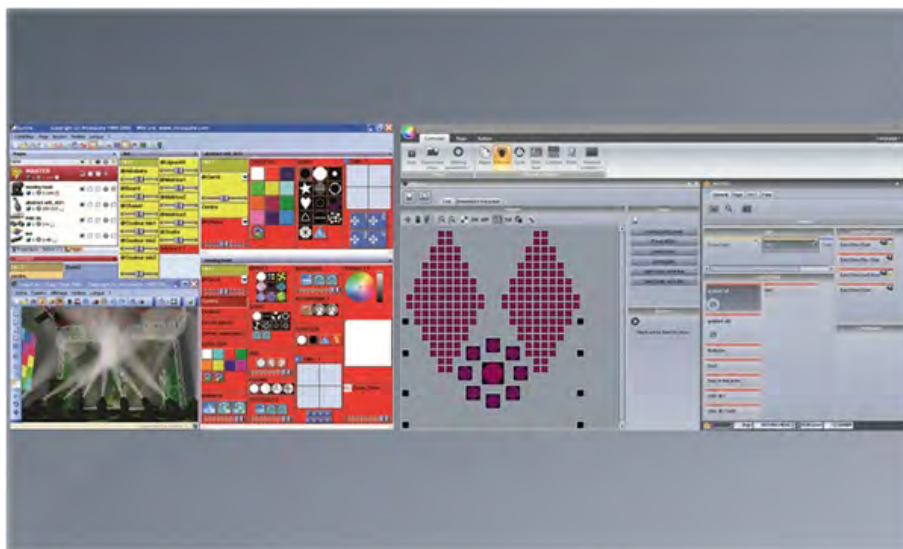
- USB-DMX interface
- PC or laptop computer running Microsoft Windows XP, Vista or Seven (if you are using a 64 bit operating system, check the hardware documentation to make sure the interface supports 64 bit)
- USB cable
- Software installation CD

If you have an internet connection, it is advisable that you visit our website at [www.nicolaudie.com](http://www.nicolaudie.com) and download the latest copy of the Sunlite Suite 2 software.

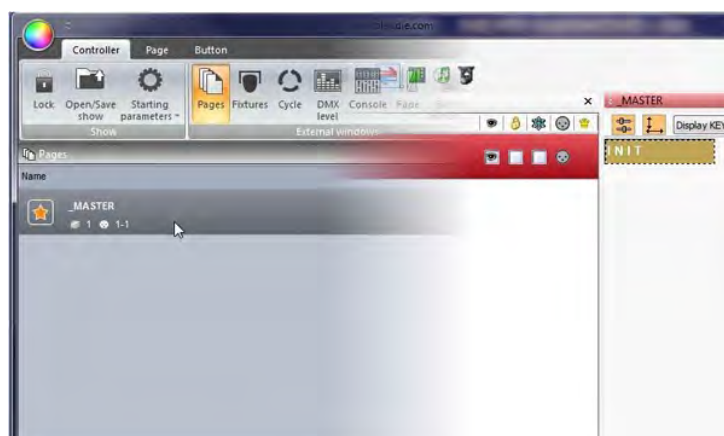


## 1. What's New to Suite 2

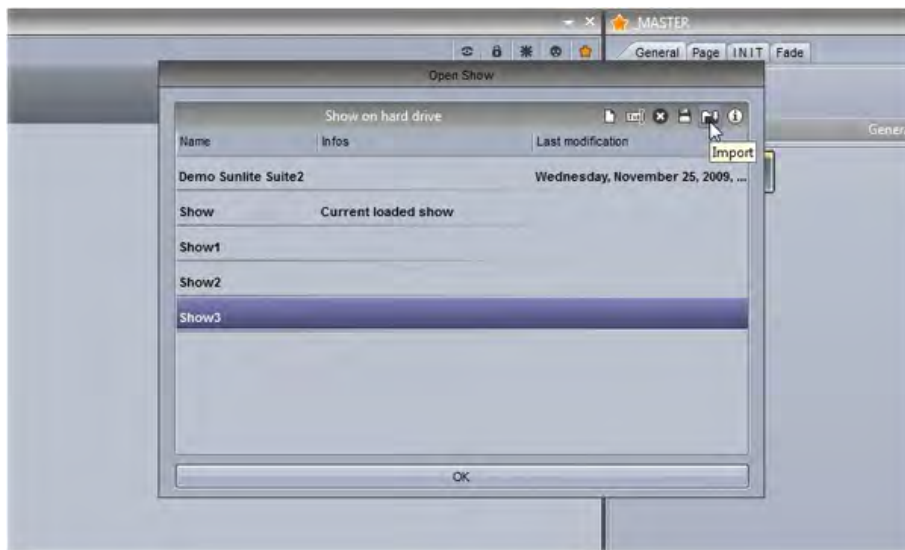
This chapter is for Sunlite Suite 1 users and outlines the new features in Suite 2



The first thing you will notice is that the menus have been replaced with a ribbon bar



All information is now saved in a .shw show file. Suite 1 show files (.ssh) can be imported.



The page panels have been re-designed to be more ergonomic and to save space. Buttons can now be re-arranged manually by ctrl+ right clicking and dragging



New button compression types such as pop-up toolboxes help save screen space.

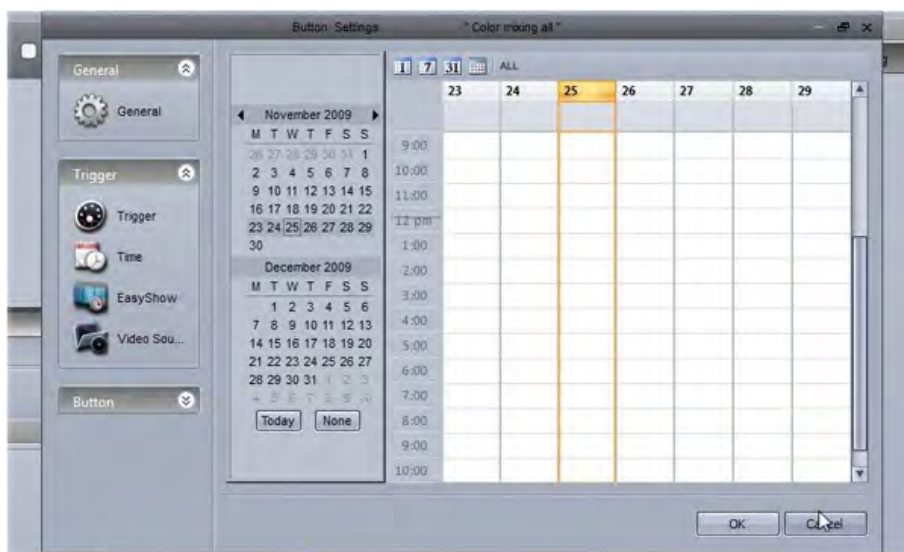




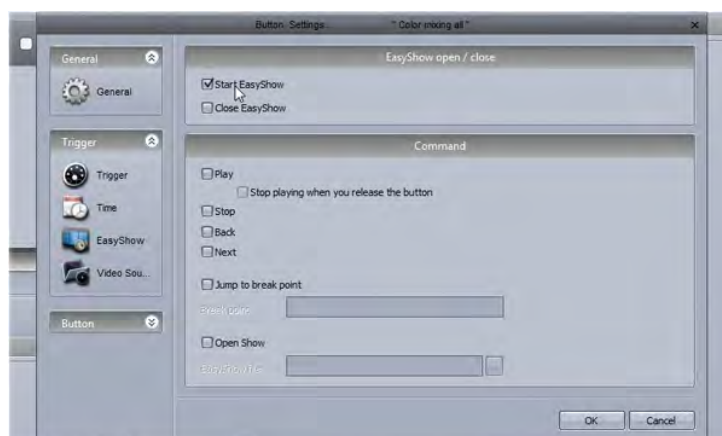
Shift+clicking a button brings up a small toolbox where button functions can be modified. Faders have been changed to rotary dials. These dials save space and allow a higher definition. They can be adjusted just as easily as faders by selecting the dial and moving the mouse up and down.



Date and time triggering of buttons now uses a graphical calendar.

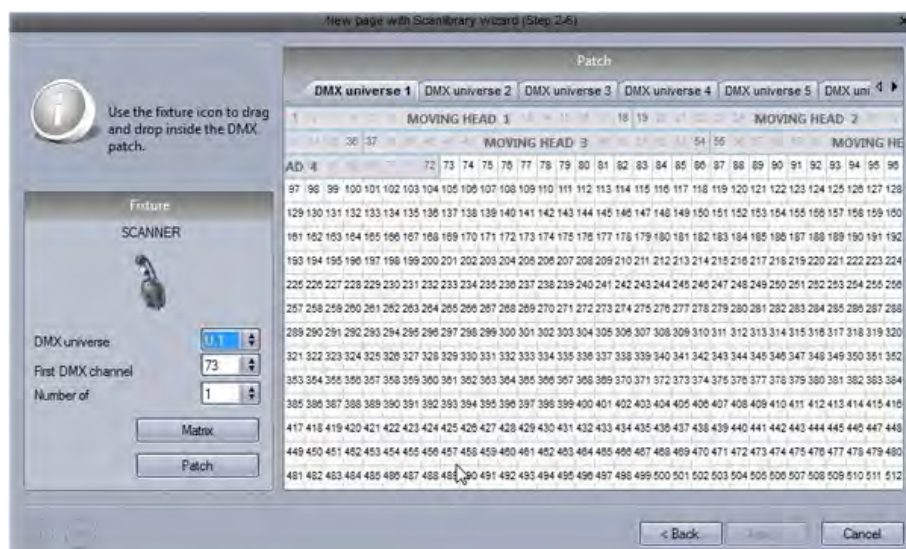


Direct access to easy show functions is now possible without having to rename buttons.

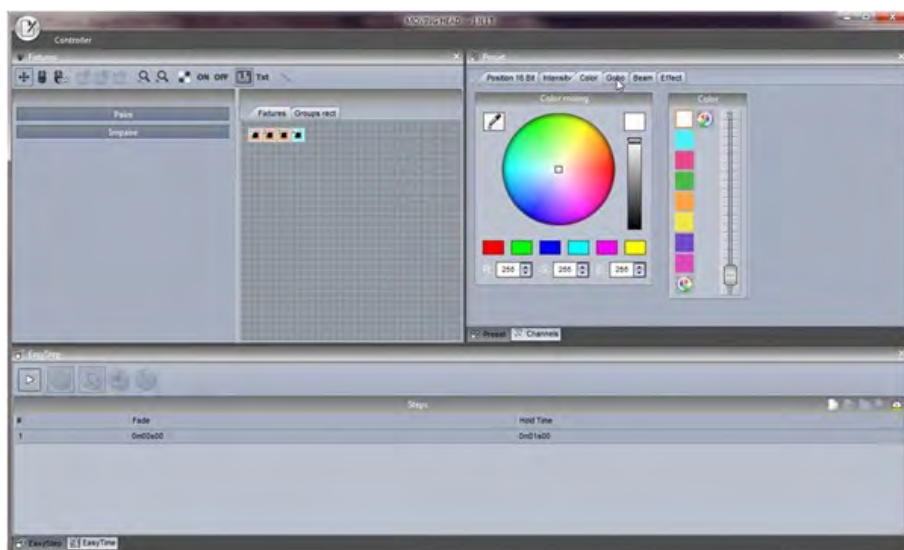




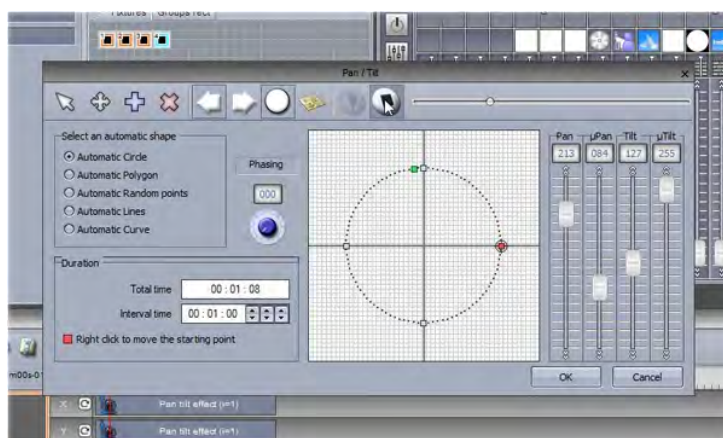
The patch manager has been changed. Fixtures can now be patched using a grid view.



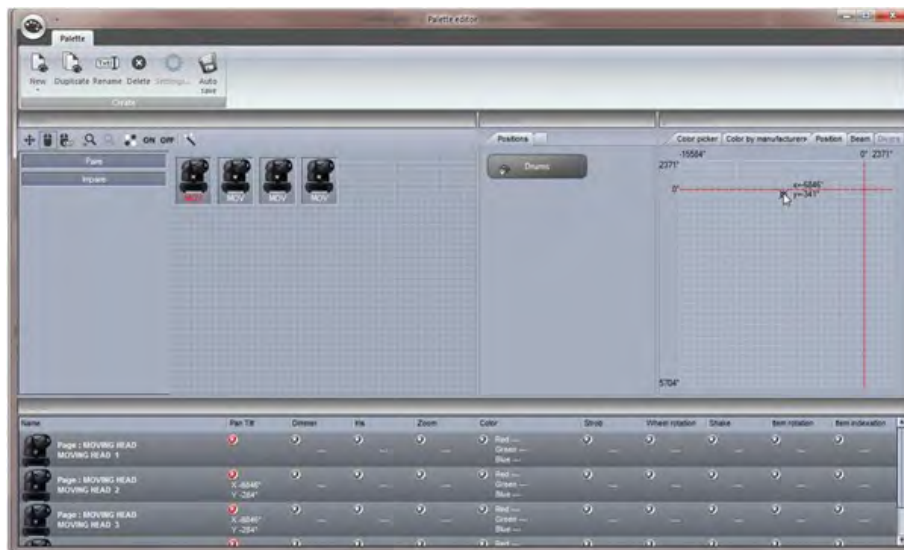
The button editor is easier to use. When fixtures are selected, common presets appear in the preset window. Channels can also be modified in the old style.



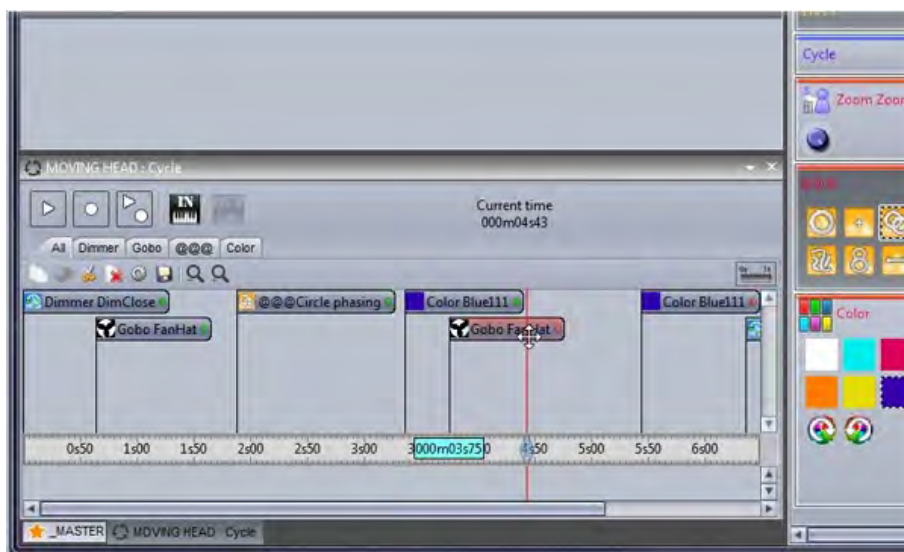
The EasyStep window can be used as before, or the new EasyTime window can be used. EasyTime now works with timelines allowing you to quickly and easily drag and drop an effect.



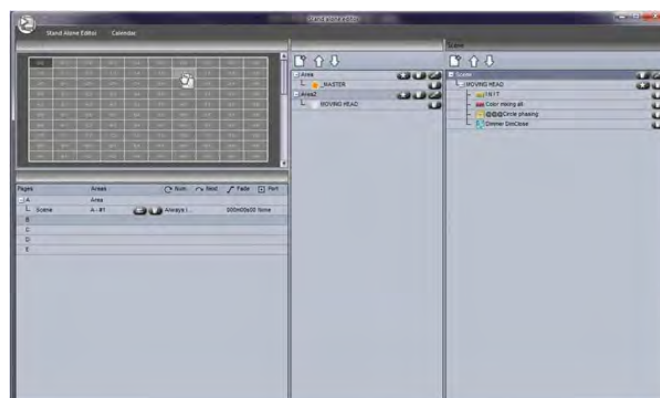
Suite 2 integrates a palette function so templates can be made for common presets such as position, then be applied to many scenes.



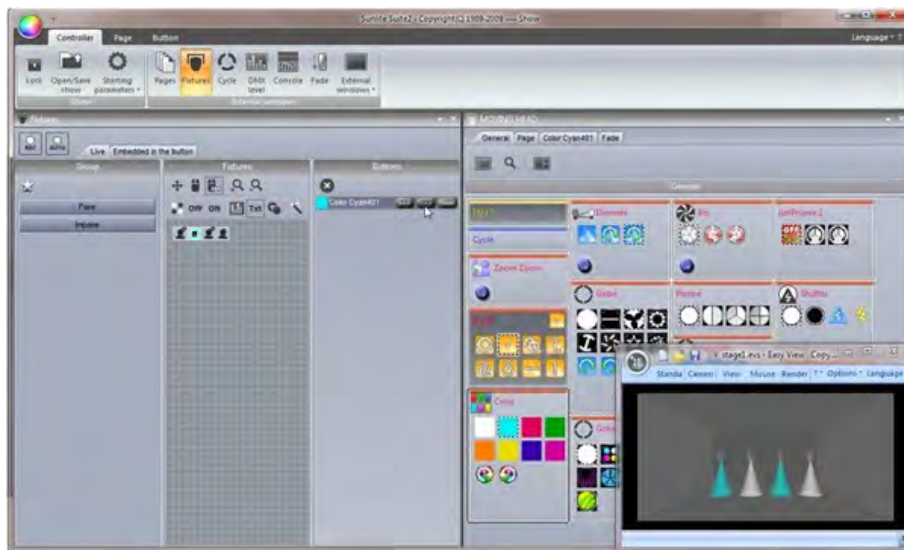
The Cycle window now contains a timeline view.



A brand new stand alone editor allows you to write directly to the internal memory or SD card without the need for saving and importing your scene buttons into Easy Stand Alone.



Advanced live control from the fixtures window. It is now possible to have a group of fixtures listen to a particular button, then add and remove fixtures from the group at any time.



## **2. The Sunlite Package**

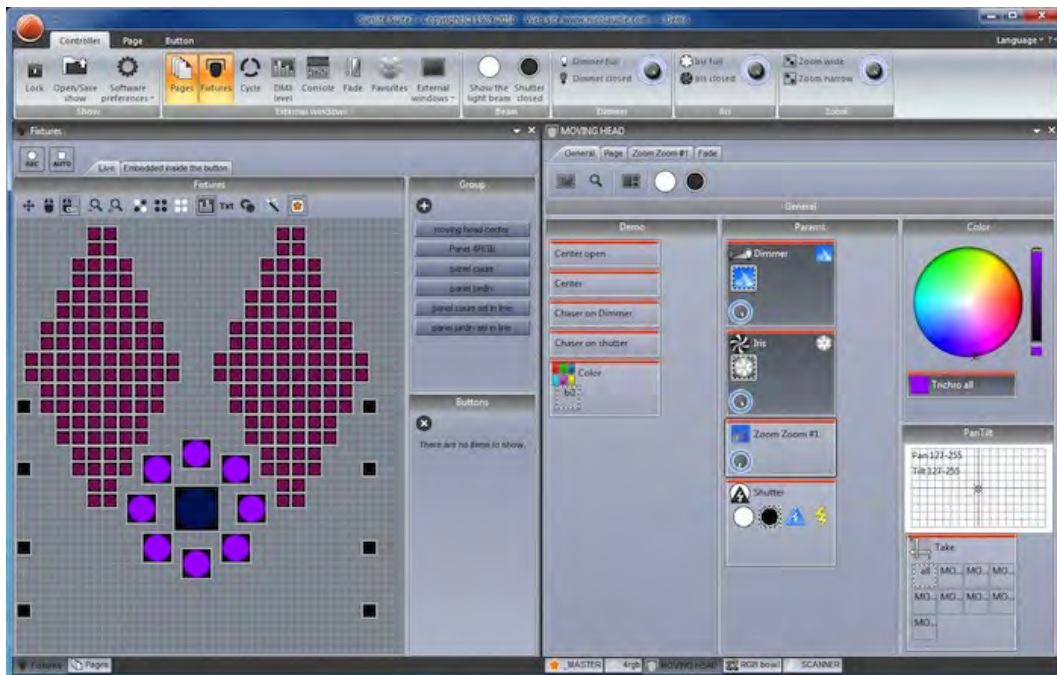
Here is a brief overview of all the software in the Sunlite package.





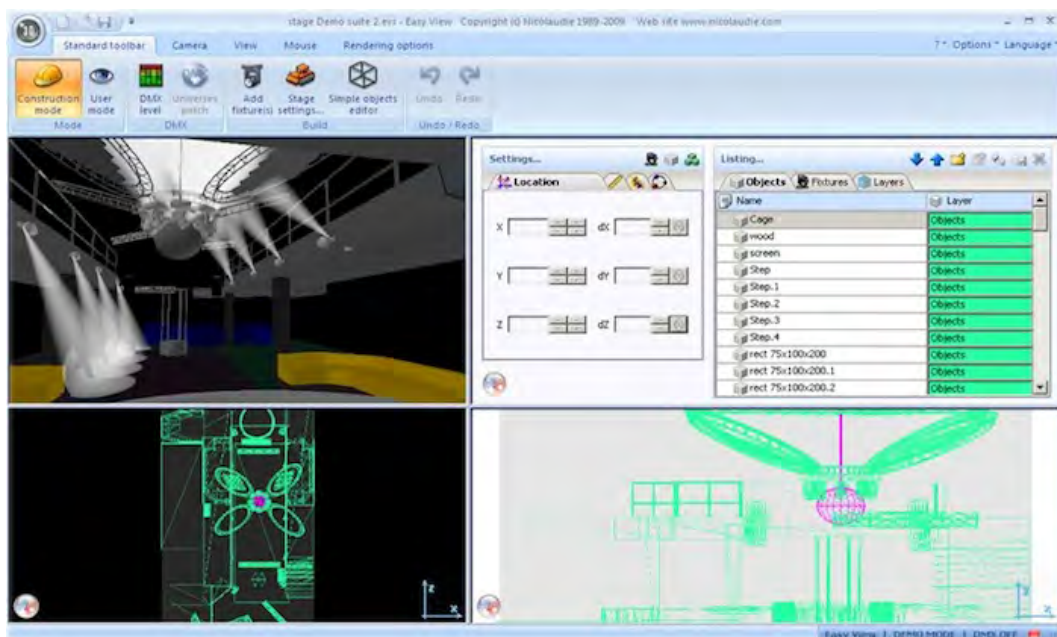
## Sunlite Suite 2

This is the main piece of DMX lighting programming software. Quickly and easily program complex effects with moving fixtures. Trigger with audio, MIDI, DMX, time and many other methods. Copy scenes onto an SD card to be used without a computer.



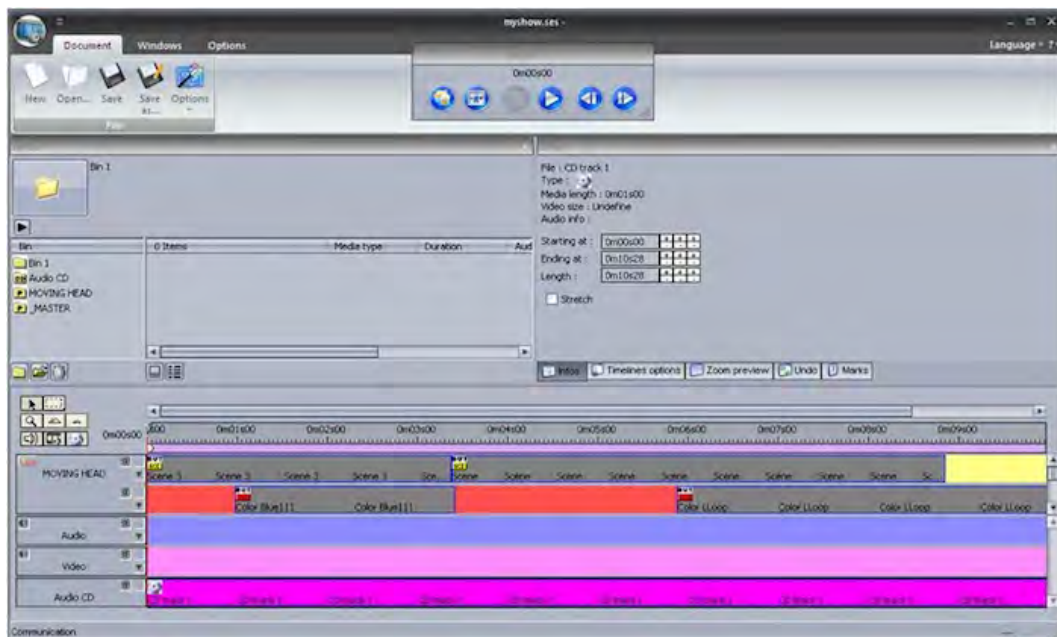
## Easy View

Our real-time 3D visualiser allows you to pre-program your show without lighting fixtures. This software will show you all of your lighting effects in the same way as they would look if your actual lighting fixtures were connected to the computer. This software is not required to program your show.



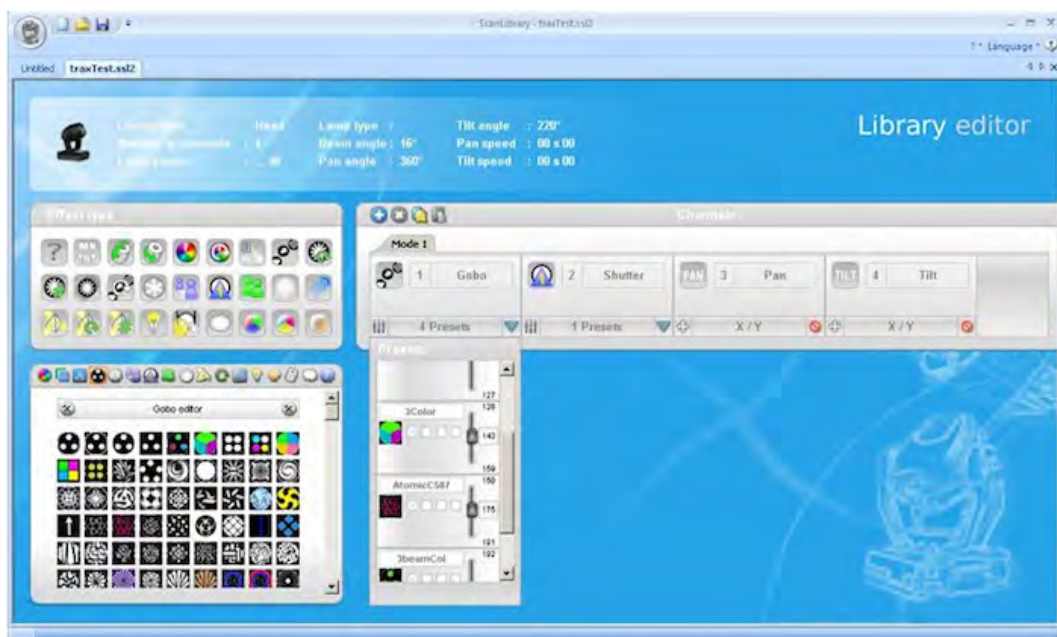
## Easy Show

Available with all first class products, this software is ideal to synchronise lighting effects with audio and video. Similar to audio editing software, Easy Show includes timelines where you can drag, drop, expand and scroll your lighting effects along with Audio and Video timelines.



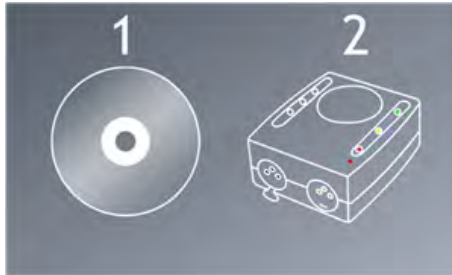
## Scan Library Editor

Create your own profiles or modify existing profiles for lighting fixtures. Many effects are included (colour, gobo, gobo rotation, prism, etc).

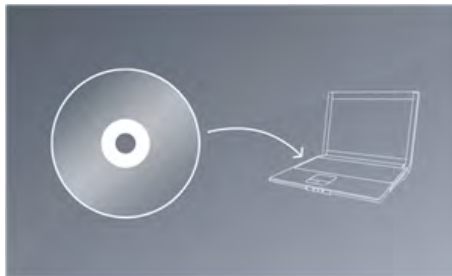


### **3. Software & Hardware Installation**

You must install the software first, then install the hardware second.



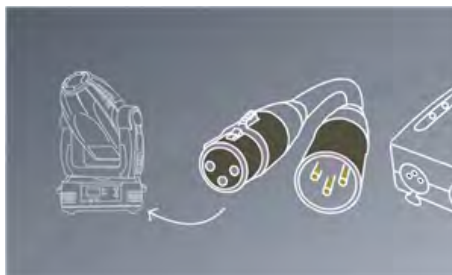
Insert the Sunlite installation CD into the CD drive of the computer. Wait for the software installation to begin automatically. If you've downloaded the software from our website, double click the setup icon.



Follow the on-screen instructions to install the software. The DMX interface USB drivers will be installed during the software installation. When the windows driver installation dialog appears, click next. If a dialog appears to say that the drivers are not digitally signed, select "Continue Anyway".

Once the software installation is complete, connect your interface to the USB socket. The second set of drivers will be installed and a notification will be shown on the taskbar once the installation is complete. Do not start the software until the driver installation is finished, otherwise your device will not be detected.

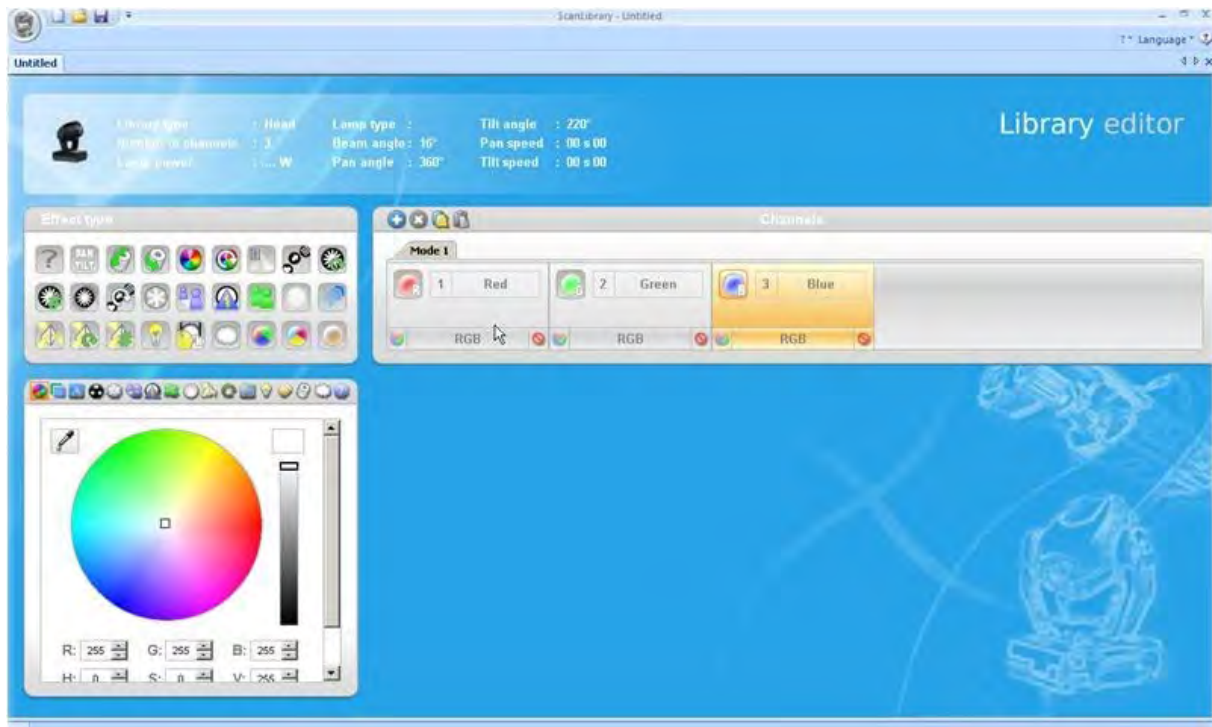
Connect the Male (3/5 pins) end of the XLR cable into the Sunlite Suite 2 DMX interface and connect the female (3/5 holes) end of the XLR into your first fixture.



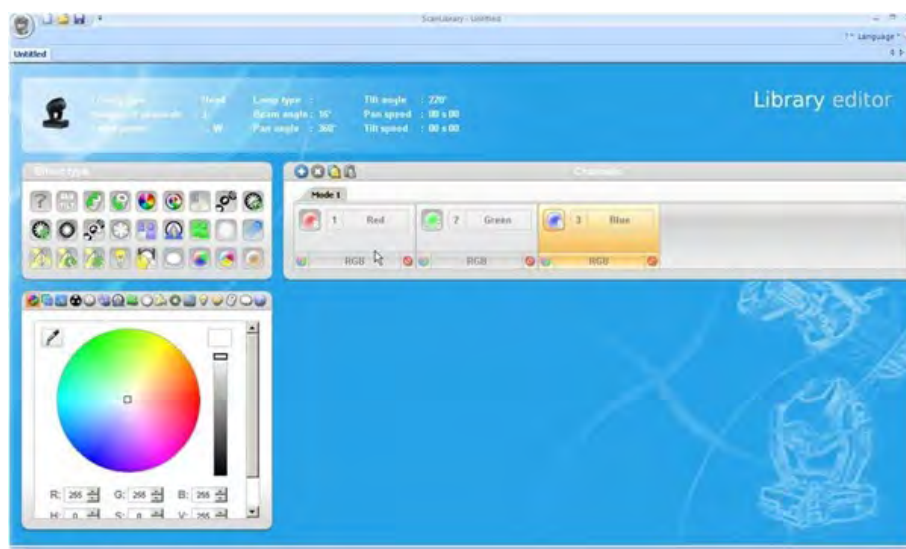


## 4. Fixture Profiles

All of the attributes of a DMX device are saved in a special file called the "Fixture Profile" or .SSL2 file. The more accurate the fixture profile, the easier it will be to program your lighting with Sunlite Suite 2. If you have an incomplete fixture profile, Sunlite Suite 2 will not understand the lights you want to control and therefore make it very difficult for you to program your lighting fixtures.



There is a profile for almost every fixture on the market. Fixture profiles can be created and edited with the "Scan Library" editor software. For more details on how to make Scanlibrary profiles, see the Scan Library tutorial or have a read of Words of Wisdom TIP 5 at [dmxsoft.com](http://dmxsoft.com).



## II Quick Start

### The Main Sunlite Suite 2 Concepts

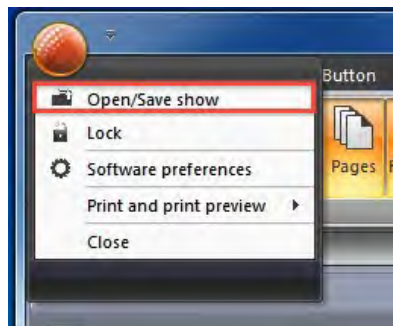
The main concepts of Sunlite Suite 2 are pages, scenes and switches.

1. Each fixture type has its own page.
2. Each page contains scenes and switches.
3. A scene controls multiple channel types. E.g. Colour AND gobo AND xy. Only one scene can be activated on a page at one time.
4. A switch controls one channel type. E.g. color OR gobo OR xy. It is possible to have as many switches activated as you like (as long as they don't affect the same channel type).

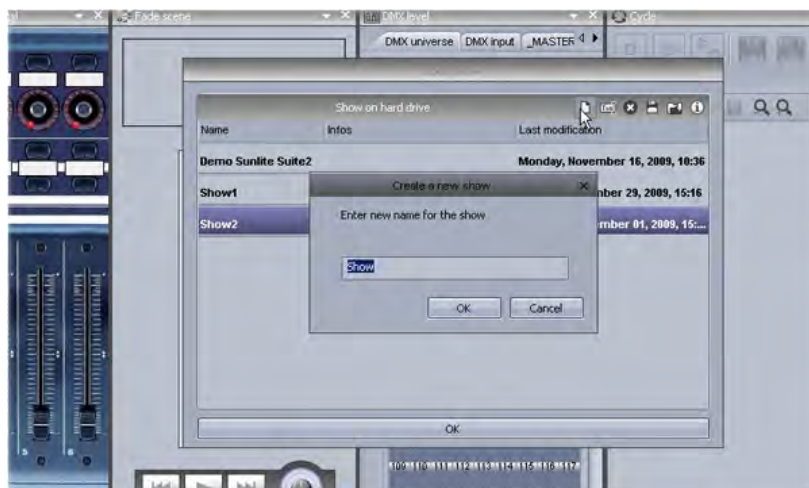
For example, you could have a scene whereby the lights are moving and dimming up and down. You can then make a "red wash" switch and when the switch is activated, the moving scene will carry on, but the lights turn red. Switches are good for quick temporary changes and scenes are where you will usually store your main lighting programming.

### 1. Creating your first show

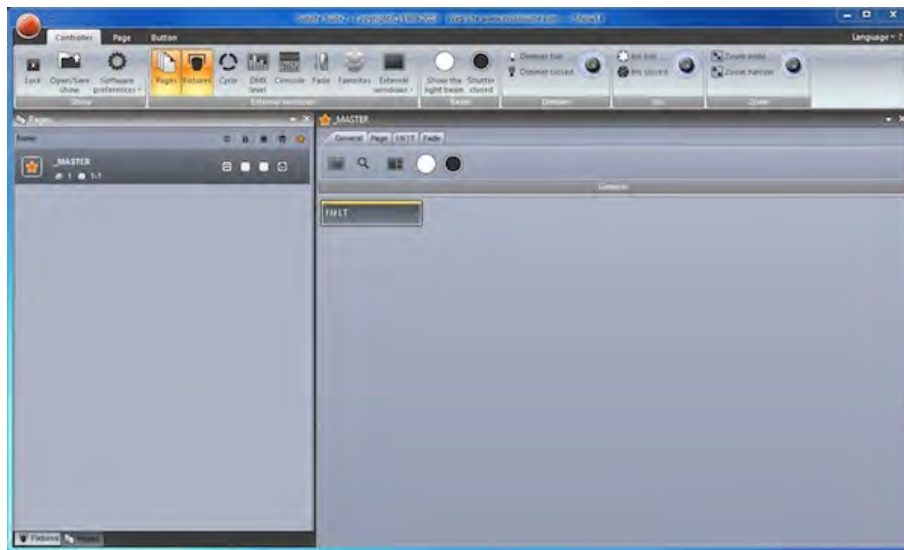
Open Sunlite Suite 2. The open the show dialog can be found from the main menu.



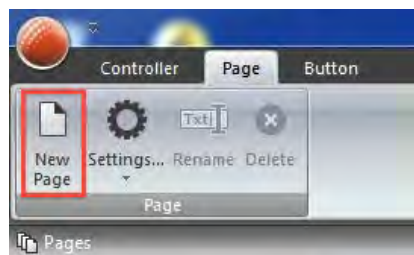
Click [here](#) to create a new show.



The window panels can be re-arranged by dragging and dropping. To start off, the only panels required are the pages and master panels.



Each different model of fixture generally has its own page. New pages can be created here



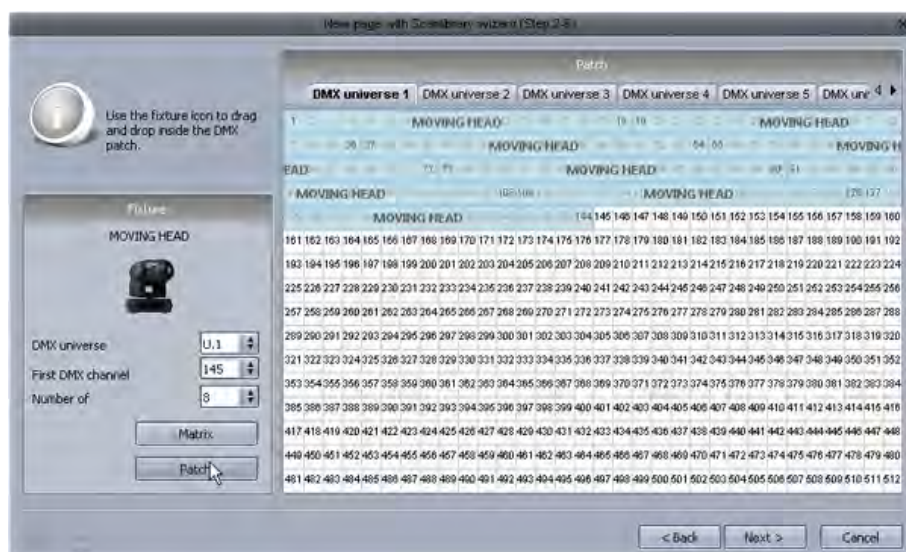
### Step 1

Select your fixture from the left. Fixtures are ordered by manufacturer. In the example above we are creating a page for our imaginary moving head which can be found in the "Generic" folder.



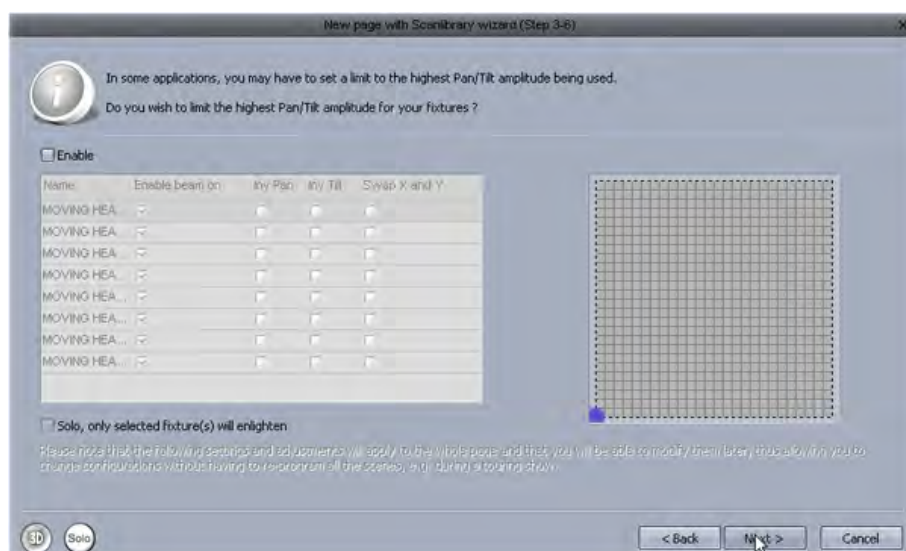
## Step 2

The software needs to know how many fixtures are being used and the starting DMX address. In the example below we have 8 moving heads starting at address 1.



## Step 3

The highest pan and tilt values of a fixture can be set here. For example, if you are using a moving head in the corner of a room in a club, you probably will not want the light beam to spend 50% of the time shining away from the room.





### Step 4

The software will now create pre-programmed switches for many of the common presets of the fixture.



### Step 5

The software can also create a variety of pre-programmed effects.



### Step 6

You have now created your first page. Click here to open the 3D visualiser and see what has been generated.



## 2. Creating your first Scene

Notice that all of your pre-programmed buttons have a red strip across the top. This means that the button is a SWITCH button. A SWITCH button usually controls just one property. For example here are 10 gobo switches. (These are compressed together to save space.)



A collection of SWITCHES can be saved into a SCENE. A new SCENE can be created here.

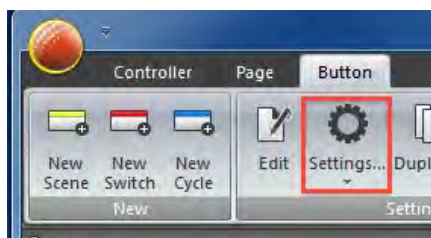


When "As you see now" is selected, everything you see will be saved into the SCENE.





You can change the settings of a SCENE here.



A SCENE can be triggered from the computer keyboard.

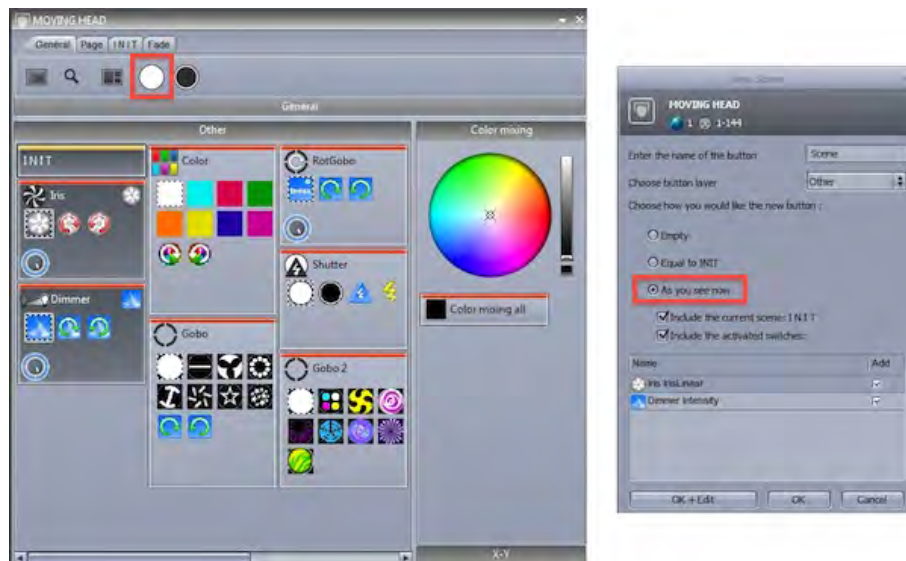


Double clicking a SCENE or SWITCH will deactivate all other SWITCHES

### 3. Editing a scene with EasyStep

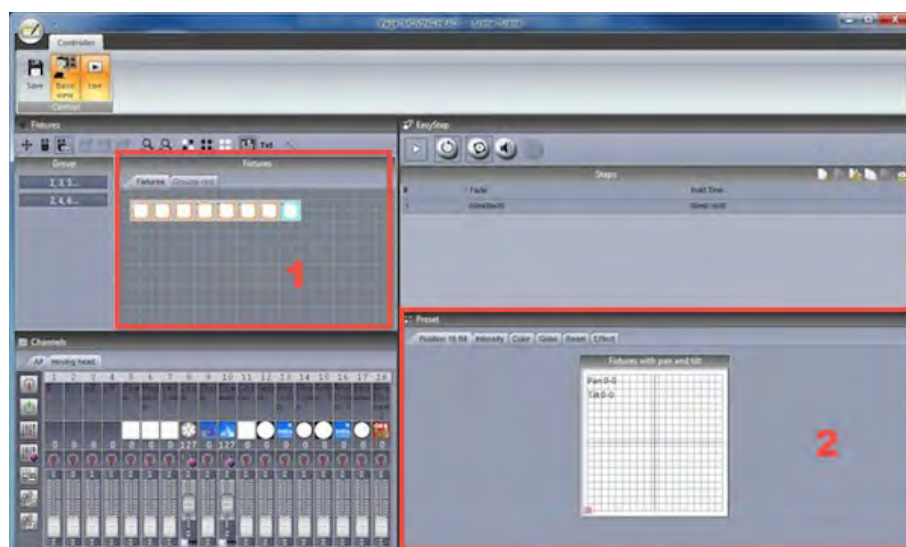
#### 1. Turn your lamps on

SCENES and SWITCHES can be edited using the EasyStep tool or the EasyTime tool. In this chapter, we will create a simple movement using the EasyStep tool. Click the beam open icon to automatically activate the shutter, iris and dimmer channels. Create a new scene, make sure “As you see now” is selected and select “OK + Edit”.



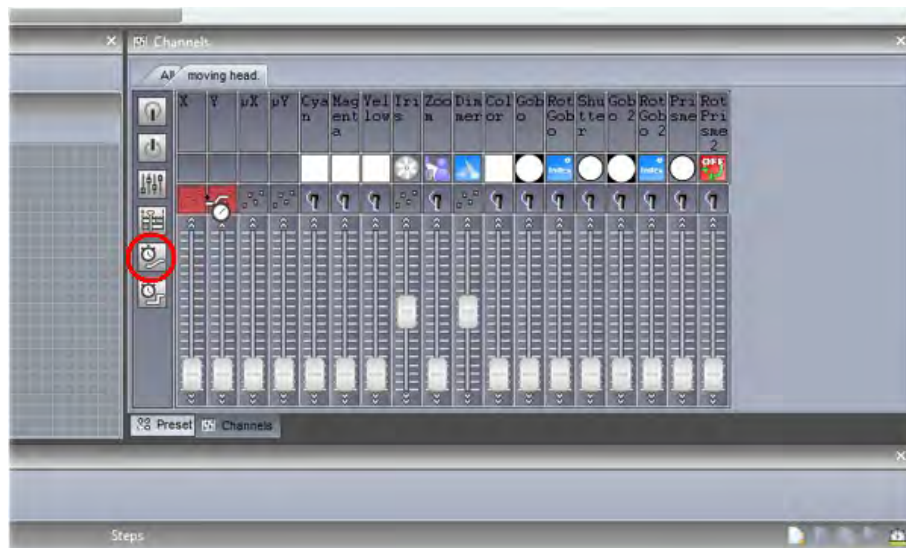
#### 2. Select fixtures to edit

Select the fixtures you wish to control here(1). Presets can be modified here(2).



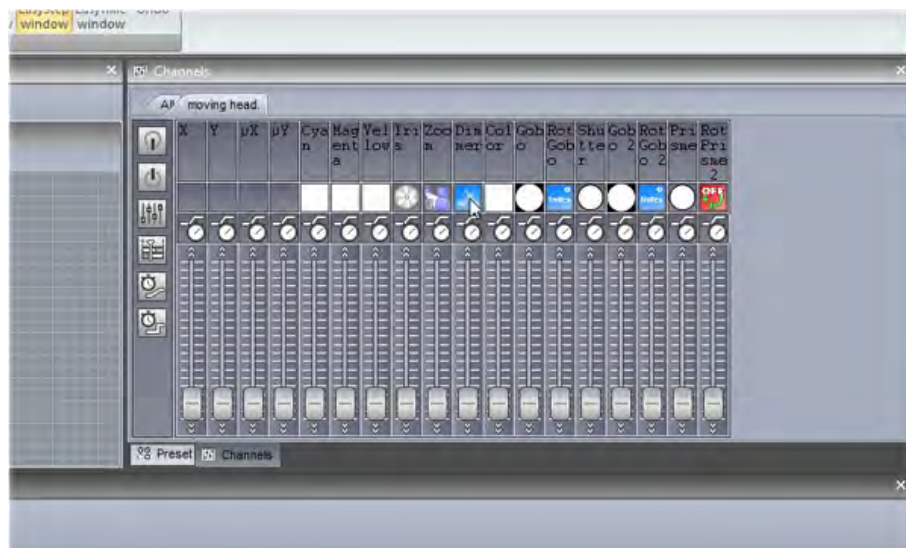
### 3. Assign EasyStep mode to the relevant channels

Each channels mode can be set here. All channels are set to off by default. To make a simple movement pattern, assign the EasyStep tool to the pan and tilt channels. Drag the EasyStep icon here and hold ctrl to select multiple channels.



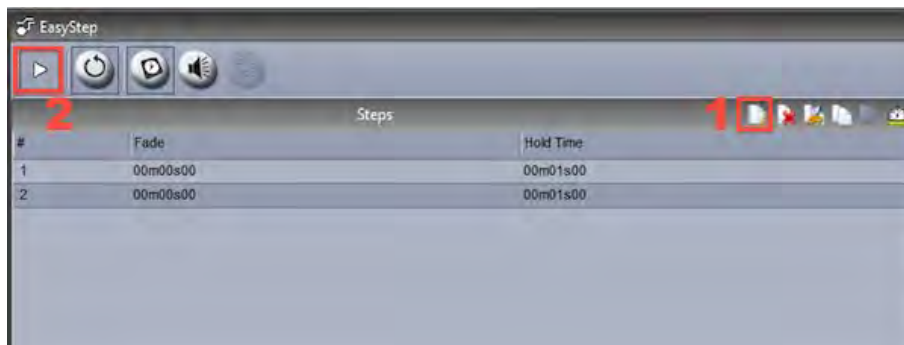
### 4. Adjust fixtures

In addition to the preset tab, you can also adjust your fixtures using the faders tab. Move the X and Y faders to position the fixtures.



### 5. Create a new step and preview

Once the parameters have been adjusted, click here(1) to create a new step. Move the X and Y faders to the second position. EasyStep sequences can be previewed by clicking here(2).



### 6. Add fade/wait times

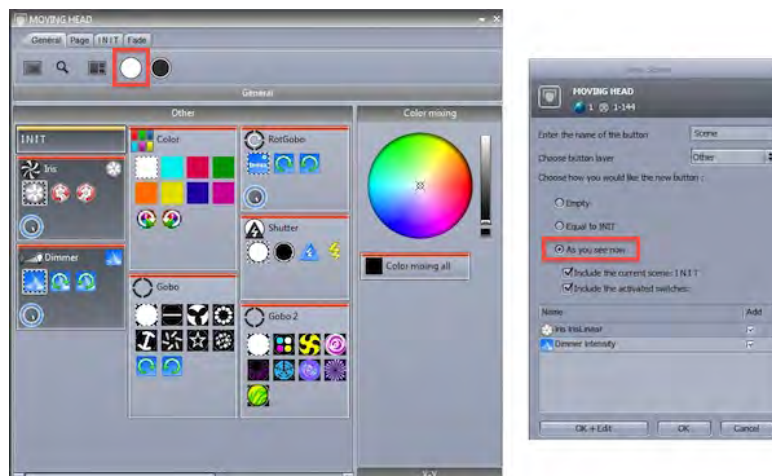
Fade and wait times can be added by double clicking a step or by clicking the clock icon.



## 4. Editing a Scene with EasyTime

### 1. Turn your lamps on

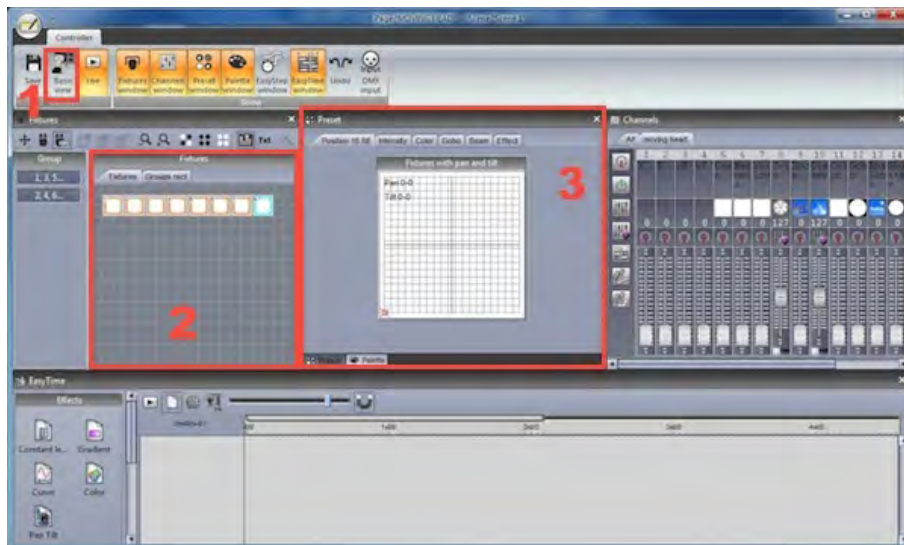
Click the open beam button to automatically open the dimmer, iris and shutter. Create a new scene, make sure "As you see now" is selected and select "OK + Edit".





## 2. Select fixtures to edit

Switch off basic positioning here (1). Select the fixtures you wish to control here(2). Presets can be modified here(3).



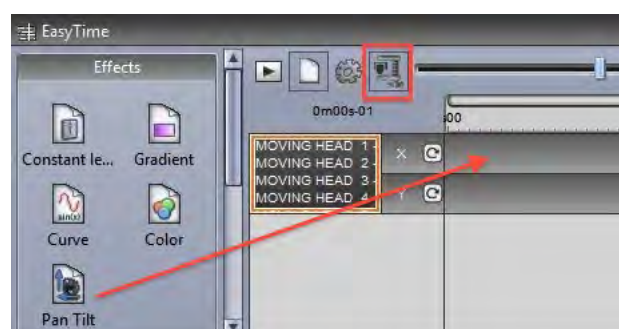
## 3. Assign EasyTime mode to the relevant channels

Assign the EasyTime tool to the pan and tilt channels. Drag the EasyTime icon here and hold ctrl to select multiple channels.



## 4. Compress channels & drag an effect

Click here to compress all moving head pan and tilt channels together then drag a pan/tilt effect.



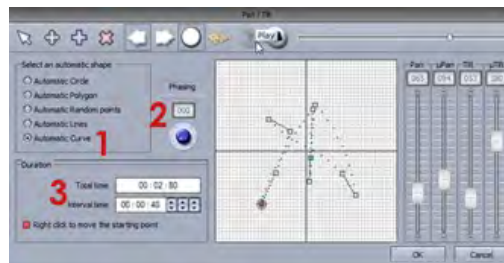
### 5. Editing your effect

Select "Automatic curve"(1).

Add phasing to your effect (2)

Change the length of the effect(3)

For more information on the effects available with EasyTime, see the EasyTime effects chapters



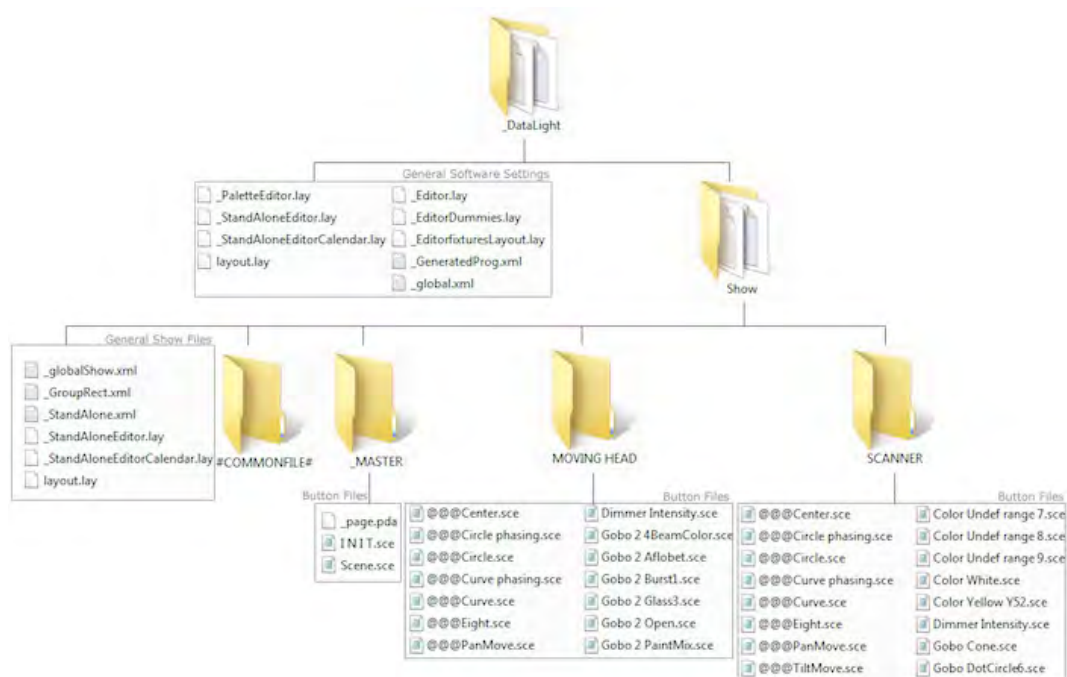


# III Programming

## 1. Show Structure

Here is a diagram of a Sunlite Suite 2 show structure. Notice that each button is saved as a separate file. Therefore you only need to manually save what is made within the button editor, everything else is saved automatically. This also makes it very easy to copy page folders and button files between different shows.

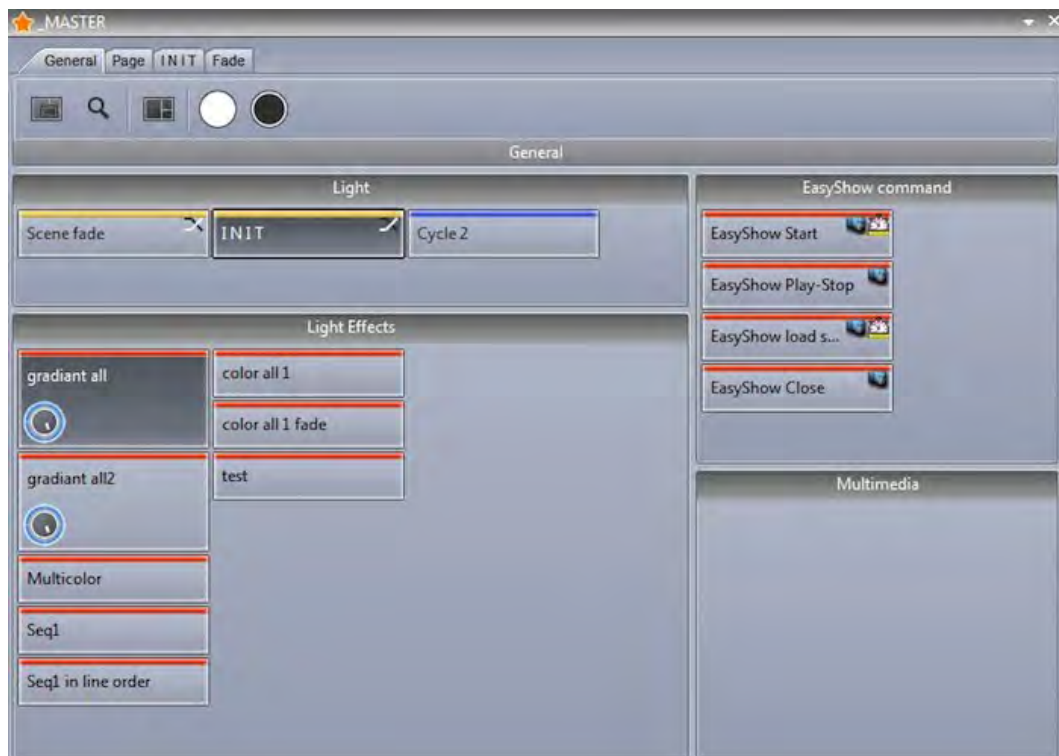
Clicking the save button in the open/save show dialog will compress all these files into one single show file allowing you to easily create a backup or use the show on a different computer.



## 2. Creating The MASTER Page

### What is the MASTER Page?

The MASTER page is a combination of all the other pages in your show. It allows you to create Scenes, Switches and Cycles which contain programming for more than one fixture type. The MASTER page is usually your main live view, where you will add your final programming.



### Programming the MASTER page

In the image below we have a page for some moving heads and a page for some scanners. Select a variety of switches on both pages, then Click here(1) to attach both pages to the MASTER page.

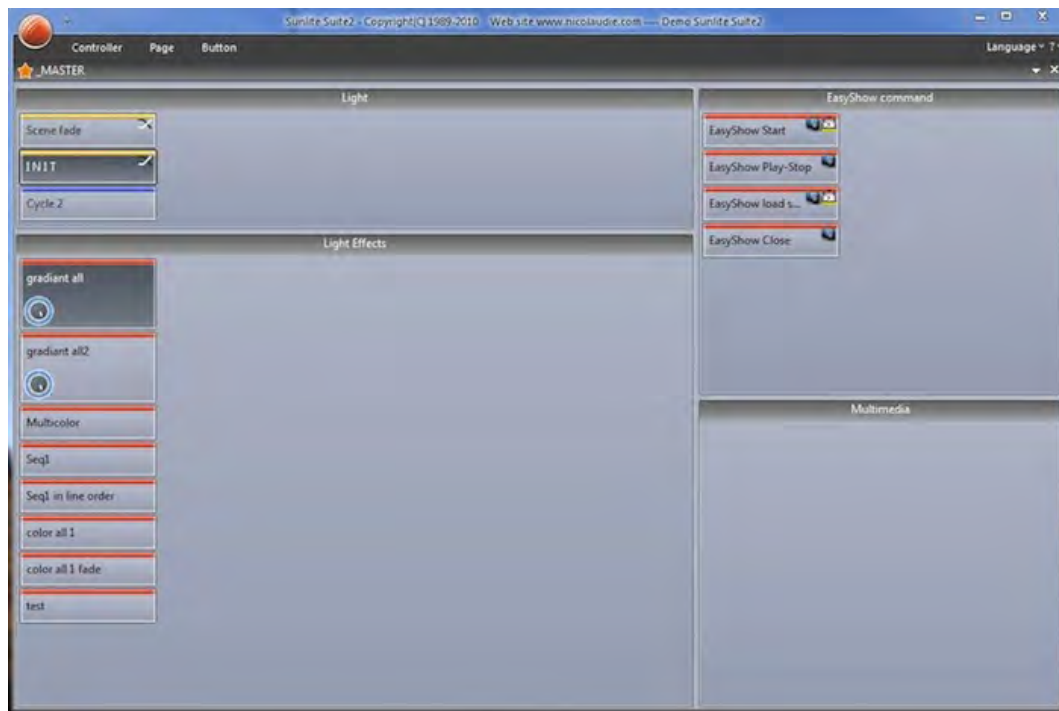
Buttons on the MASTER page are created in the same way as on any fixture page. If you create a button and select the “As You See Now” option, all currently activated buttons in all pages will be saved (as long as the page is attached to the MASTER page).



Scenes can be modified very quickly. To modify a parameter, ctrl+right click and drag a switch from a fixture page to the MASTER page button you wish to modify and select “copy”. In the example below we are changing the moving head gobo.



If you are making a show for somebody else to use, or if you are limited on screen space, you can close and dock all other windows and have just the MASTER page enabled. See the access privileges topic for more information.



### 3. Creating Cycles

#### What is a Cycle?

A Cycle is a cue list of scenes and switches. Cycles are useful if you have a set of scenes and switches and wish to trigger these sequentially. Click here(1) to create a new Cycle and click here (2) to view the Cycle panel.

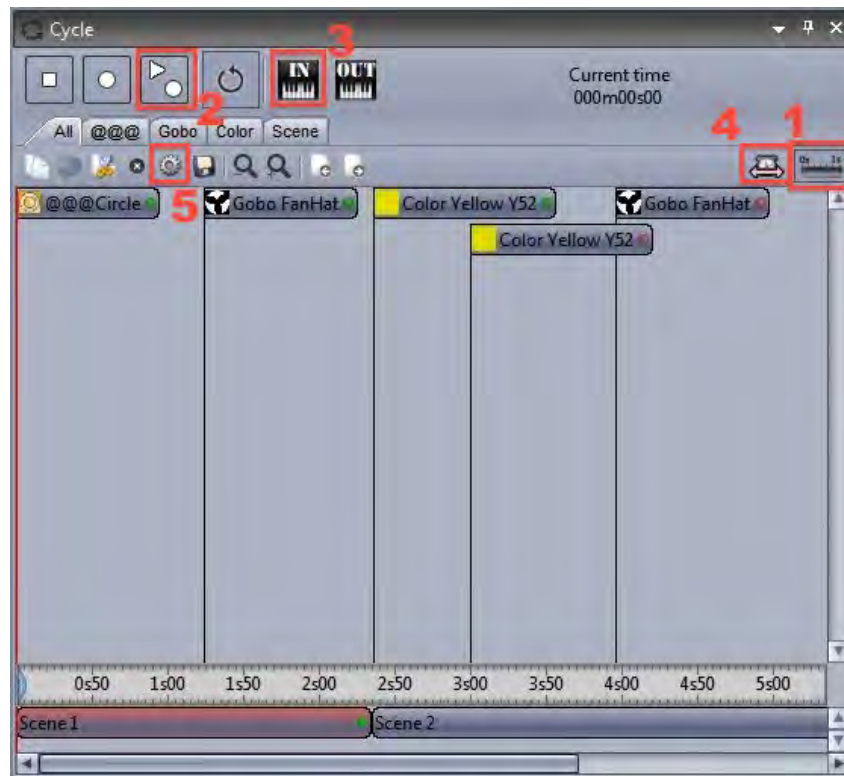


#### Recording a Cycle

To record a cycle; click record, select a combination of buttons then click record again when you are done. The selected Switches are displayed at the top and the selected Scenes are displayed on the bottom.

- Buttons can be moved around the timeline by clicking and dragging
- The button activation order can be viewed in a list by clicking here(1)
- Additional button presses can be recorded whilst playing a Cycle by selecting the play/record button(2)
- A cycle can be triggered by Midi Time Code by clicking here(3) (See the Midi Time Code chapter for more information)

- The cycle will play up to the end marker. To change the cycle end time, drag the end marker or click here(4) to enter an end time manually.
- Click here(5) for advanced scene settings



### Cycle Button Settings

The cycle button settings allow you to determine what the button will do when it is triggered within the cycle.

Type of action- determines if the button is switched ON, switched OFF or has a button dial/live MODIFICATION applied

Start time- manually set the time at which the button is triggered

Go- this will pause the cycle when the button is triggered. This is useful if you are controlling a pre-programmed show and you want to manually skip through a cycle list (as with a traditional lighting console)

Button Dials- allows you to change the Dimmer, Speed, Size and Phase dials of the button

Live- Allows you to add and remove fixtures from the button

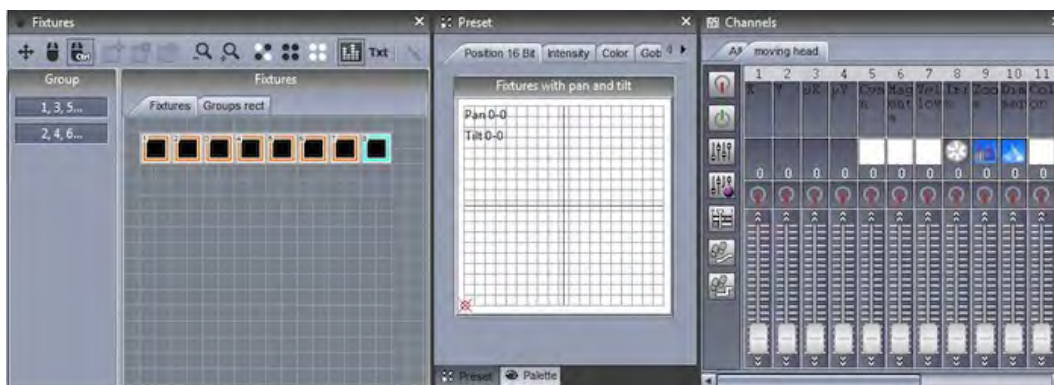




## 4. Button Editor

### Channels

Select 'Edit' under the "Button" tab on the main ribbon to access the button editor. You can also ctrl+click the button. To edit a fixture, select the fixtures you wish to edit from the Fixtures panel. The channels will appear in the channels window.



### Preset Tabs

The Preset tabs allow for quicker modification of presets. A color wheel allows you to quickly modify the color of a fixture and the X-Y grid allows you to quickly change a fixtures position. To use the preset tabs you must have the Dimmer or ON channel function assigned.

If you are editing a button on the MASTER page and are working with multiple fixtures of different types, the Preset window is able to understand common channels between the fixtures. For example, if you are using a CMY moving head, and an LED RGB panel, you will be able to modify the color of both fixtures with a single color wheel.





### Using the Channel Window

The button editor allows you to modify DMX channels in a variety of different ways. Before editing your scene, it is important to make sure that each DMX channel is assigned to the correct function. To assign a channel function, drag one of the icons from the left onto the top of a channel. Hold ctrl to drag onto multiple channels at once.

Off: Deactivates the channel

On: Allows manual adjustment of the channel fader

Dimmer: Allows manual adjustment of the channel fader. The channel will fade between the set value and 0 if the button dimmer dial is moved

Dimmer Min-Max: Allows a minimum and maximum value to be set. The channel will fade between the minimum and maximum values if the button dimmer dial is moved. Select the "Min" checkbox at the bottom of the fader to set the minimum value

Easy Time: Allows the channel to be edited using the Easy Time tool

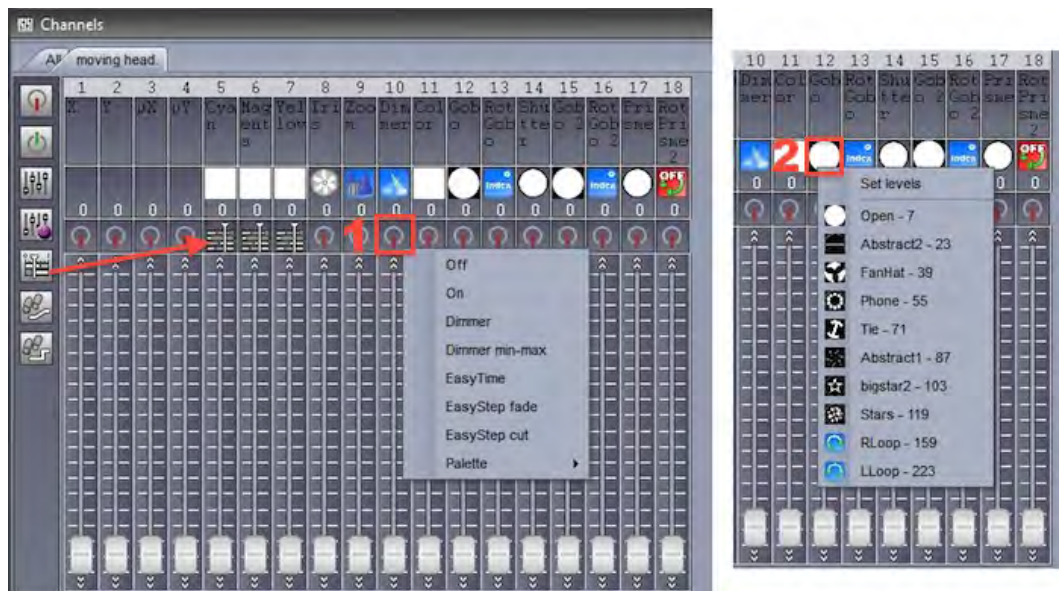
Easy Step Fade: Allows the channel to be edited using the Easy Step tool

Easy Step Cut: Allows the channel to be edited using the Easy Step tool but ignores any fade commands. This is useful for a gobo or shutter channel

-To jump to a particular function, right click here(1) and select the function.

-To jump to a particular preset (eg. gobo holes, color red, shutter closed ), right click here(2) and select the preset.

-Double click the white number to manually type the DMX value or %



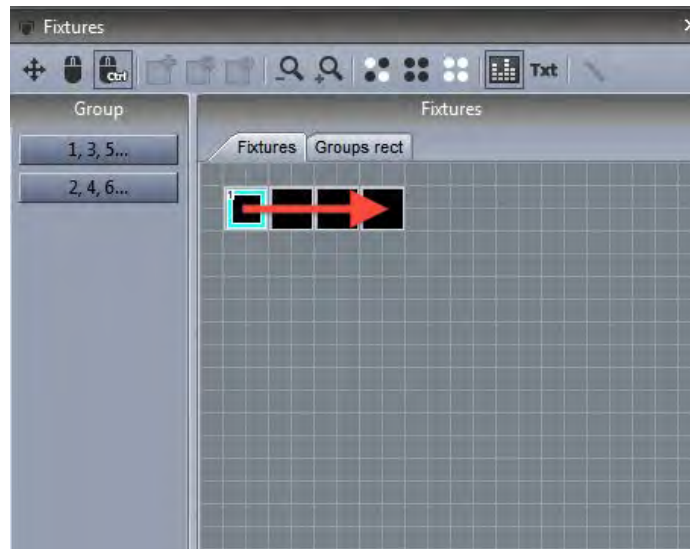
Select the "All" tab to see the channels of all your fixtures.

- You can number your fixtures by index, channel address or universe number by right clicking at the top of the window
- Right click one of the white numbers to toggle between DMX value and % value
- Double click on one of the white numbers to manually enter a DMX or % value

tip: when using the All channels tab, docking the window at the bottom of the button editor will allow you to see more DMX channel faders, giving a similar view as the button editor in Sunlite Suite 1



Dragging a fixture on top of another will copy all editor data including dimmer, EasyTime and EasyStep.



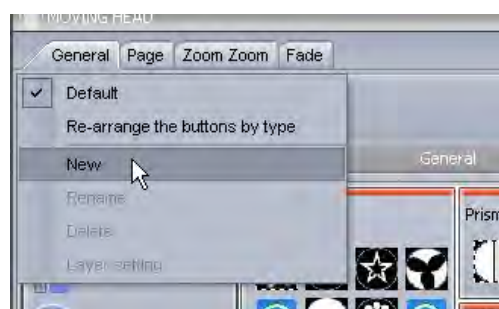
## 5. Arranging Buttons

Buttons can be arranged in a variety of different ways. Ctrl+right click and drag a button to manually change its position.

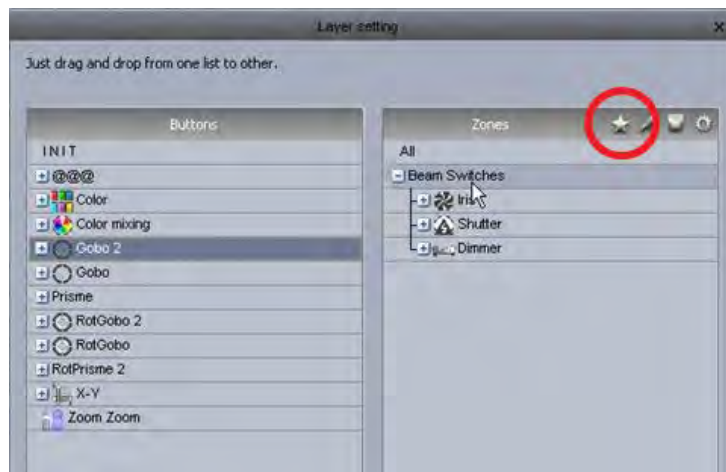


### Custom layers

Custom layers can be created here.



Click here to create a new zone for your layer, then simply drag your parameters into the relevant zone. Click the settings button if you want to embed a color mixing wheel or XY grid inside the zone.



### Compression

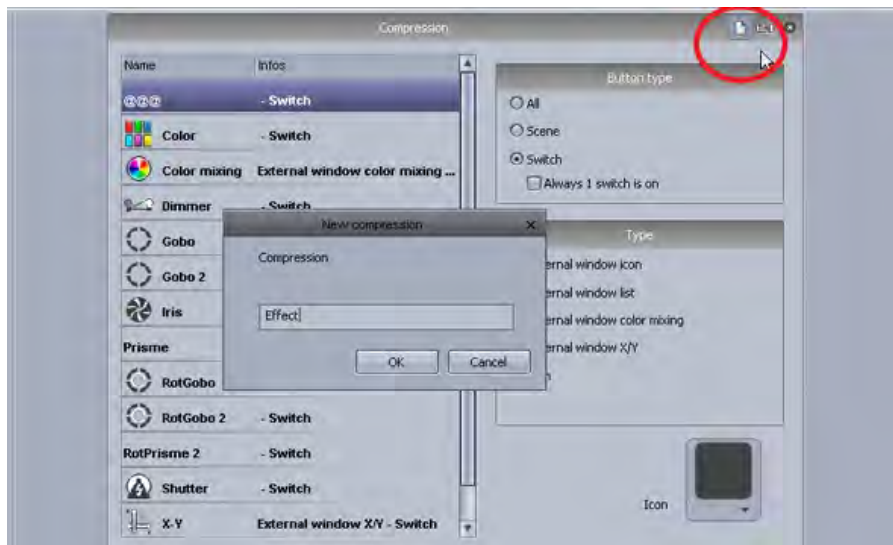
Common switches can be compressed into one button. For example all the gobo switches are grouped into one switch button like the example shown below.



To create a compression, make sure the Scenes or Switches you want to compress are named with a common prefix. In the example below we have 4 scenes which start with the prefix "Effect".



Button compression types can be modified within the page settings. Create a new compression here and enter the compression prefix, in our case this is “Effect”.



Several different compression types can be created.

External window icon: a dialog pops up with the button icons

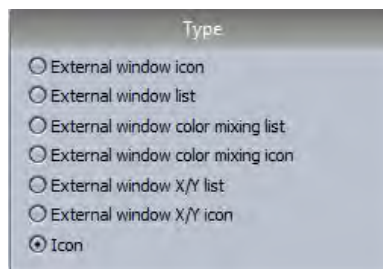
External window list: a dialog pops up with a list of the buttons

External window color mixing list: a dialog pops up with a list of the buttons and a color mixing wheel

External window color mixing icon: a dialog pops up with the buttons icons and a color mixing wheel

External window X/Y list: a dialog pops up with a list of the buttons and an X/Y grid

External window X/Y icon: a dialog pops up with the buttons icons and an X/Y grid





## 6. Button Dials

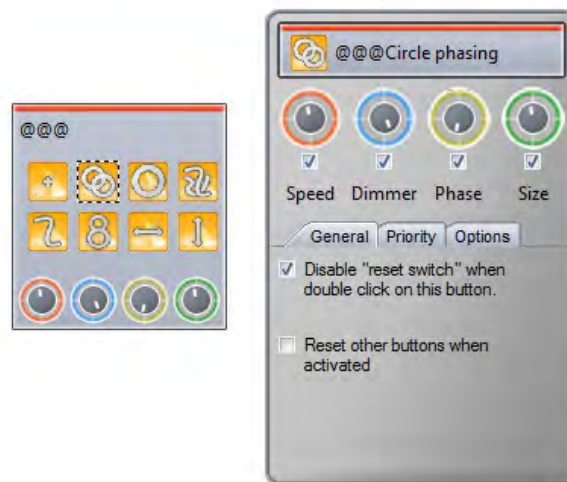
The dimmer, speed, size and phase of a button can be changed by shift+right clicking a button and selecting "Show Fades:" from the menu, or by shift+clicking on the button and selecting one of the dials.

Speed: Changes the speed of an EasyTime or EasyStep sequence

Dimmer: Fades any channels with the dimmer or dimmer min/max property assigned. Dimmer and Color mixing channels are also adjusted unless they are set to OFF

Phase: Takes an EasyTime sequence and starts it at a later point in the sequence for each fixture

Size: Takes a pan/tilt effect and changes the size

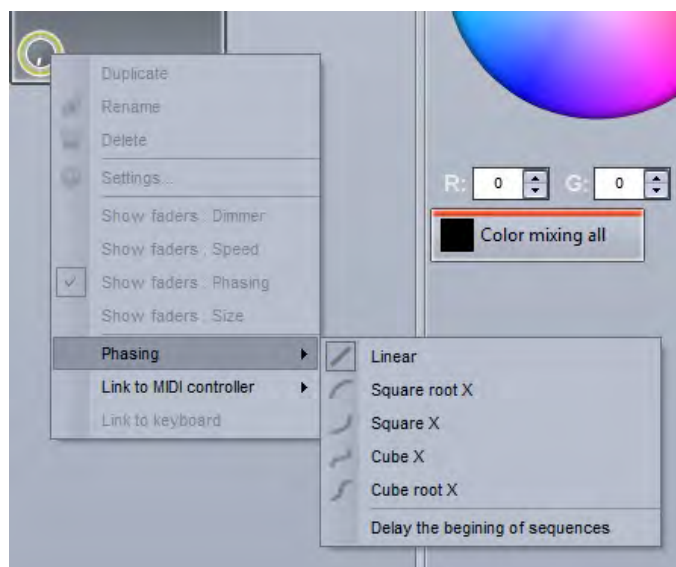


Speed, Dimmer, Phase and Size dials can also be accessed under the button tab at the top of the fixture page. Page dimmer and speed dials can be accessed under the page tab but be careful, if you turn the page dimmer to 0, you will never have any light output!



Advanced Phasing (not for beginners!)

Shift+right click a switch phasing dial to view the advanced phasing menu. Here we can determine how Suite 2 will phase a switch.



When no phasing is applied, the example sequence here fades from red to yellow



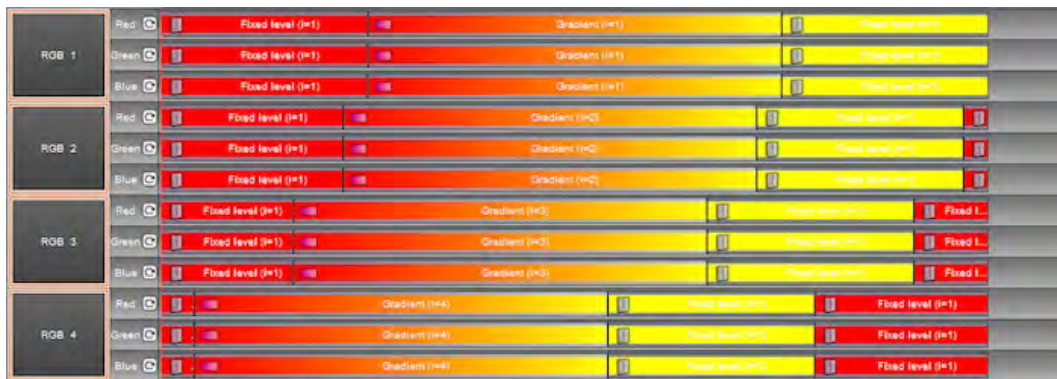
When phasing is added, the sequence starts at a later point for each fixture. As the phasing dial is increased, the time between each of the fixtures starting points increases.



When linear phasing is applied, the difference between each of the fixtures starting times is the same.

There are 4 different non-linear phasing types available. With non-linear phasing, the difference between each of the fixtures starting times changes. The example below shows the outcome of a "Square x" phase. The difference between each of the fixtures starting times gets shorter which can be used to great effect to produce a sequence which looks like an object falling for example.

Cube root x can often be used to create more realistic wave and rippling effects.



When "Delay the beginning of sequences" is selected, the phasing is linear, however instead of changing the starting point of the sequence for each fixture, it holds the first step of the sequence and adds a delay.

This is very useful for creating color sweeps!

Note: "Looping" must be switched off for this type of phasing to work because the last frame of each timeline is frozen to compensate for the delay at the beginning.

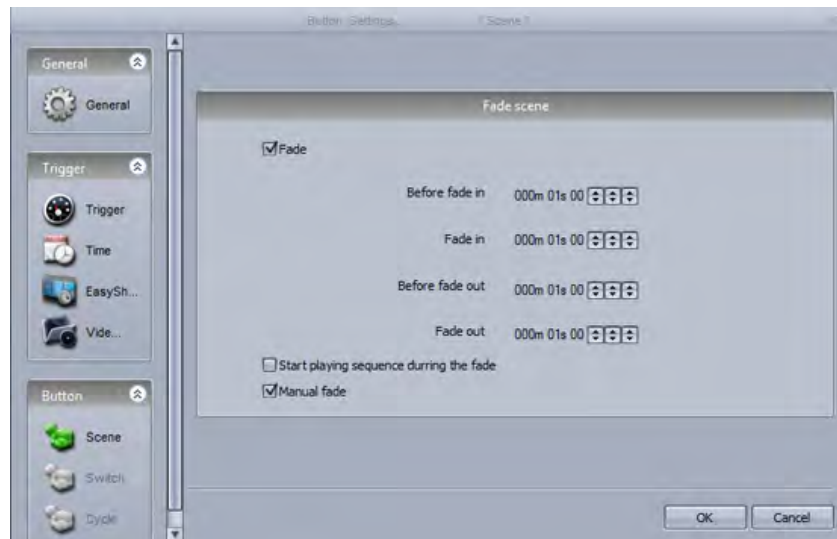


## 7. Scene Fading

We can set fade times between scenes. This is useful if we want to fade between two static positions, or fade the dimmer. The fade function must first be enabled on the master channels. This can be done within the page settings.



Fade times can be added within the scene settings.



To visualise the fade, open up the Fade Scenes panel. A fade can be paused, replayed(1),skipped to the beginning/end(2) or controlled manually(3) (if manual fade is enabled within the scene settings).

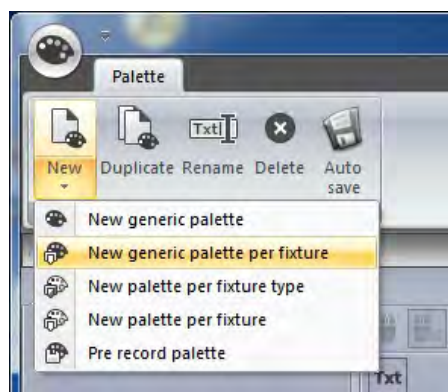




## 8. Palettes

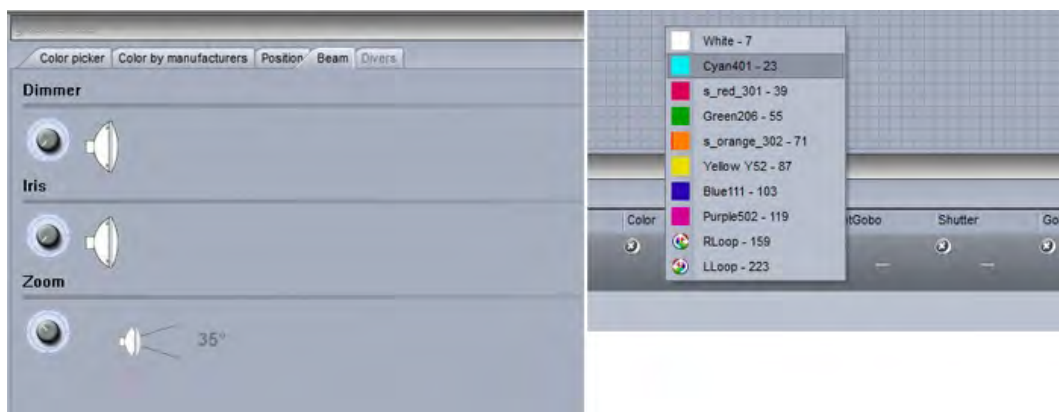
Palettes are very powerful when programming lighting. Imagine you are on a tour and you get to a different venue and realize you need to move your drums 2 meters backwards, you now have to change each of your scenes. This can be time consuming! With Sunlite Suite 2, we can set up Palettes. These can be useful if you need to update a set of scenes at once.

New Palettes can be created here. If you want to create a preset palette such as a gobo or a color wheel color select "New Palette per fixture". If you want to create a palette with a variable preset such as pan/tilt, a color mixing color, a dimmer, iris or zoom preset you will need to select "New Generic Palette Per Fixture". See the next topic for more information on the different palette types.



Use the global effects panel to adjust your fixtures or right click and select a preset below (not available when using Generic Palettes). Hold shift to assign the same preset to all selected fixtures.

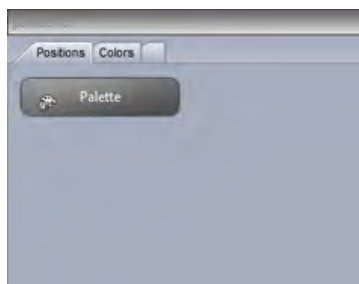




To delete the preset from the pallet, click the cross.



New palette groups can be created here.



Palettes can be applied to scenes within the button editor. Drag the palette onto the desired channel and hold ctrl to select multiple channels

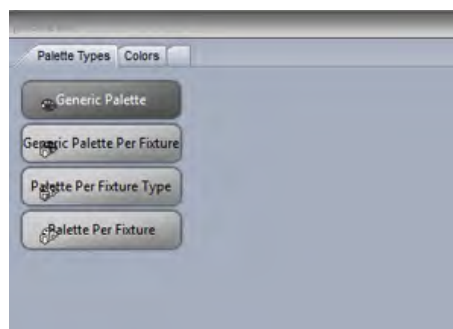
Palettes can also be dragged directly onto a fixture, an EasyStep step or an EasyTime constant level block.

For information on how to use a palette inside a dynamic effect, see the advanced palettes topic.



## **9. Palette Types (advanced)**

The previous topic describes how to create a palette and assign it to a scene. This topic will explain the various palette types.



### **Standard and Generic Palettes**

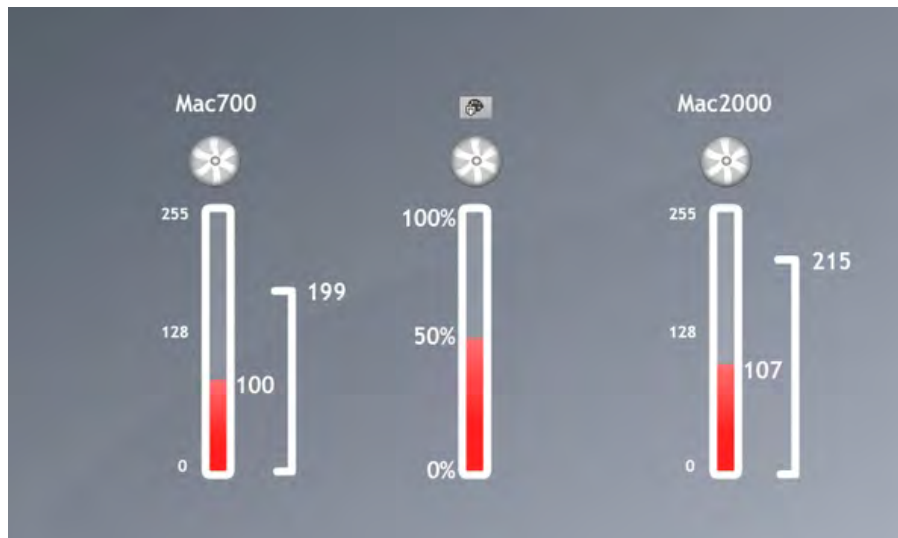
There are two types of palette, a STANDARD palette and a GENERIC palette. The standard palette saves a DMX value, for example DMX 251 on the gobo channel. A generic palette saves a value relative to a particular preset, for example dimmer 50%.

Standard palettes are useful if you want to save a particular preset on one type of fixture such as "Gobo Holes". Generic presets are useful if you need to save a variable length preset such as dimmer, iris, focus or zoom amongst different types of fixtures.

### Generic Palette Example

If we were using some Martin Mac700's and Mac 2000's, the range of their iris sizes are different.

If we have created a generic iris palette then this is not a problem. We simply create a generic palette with 50% value and Sunlite Suite 2 will output whatever DMX value is 50% of the iris size. The DMX value 100 will be sent to the Mac700 and the value 107 will be sent to the Mac2000.



### Generic Palette Example 2

Imagine that you want to create some dimmer palettes. Dimmer palettes can be useful as the light output can look different depending on the size of the venue and the other lights you are using.

However, some fixtures have inverted dimmers, no problem! Just create a generic palette for the dimmer and it won't matter which brand of fixture you insert, what channel or range the dimmer is, whether it is inverted or not, the brightness of the light will always be 50%.

### Palettes Per Fixture and Per Fixture Type

Standard palettes can be created per fixture or per fixture type. Palettes per fixture type can be included inside EasyTime effects, however palettes per fixture cannot. This is because, when an EasyTime effect is built it does not ask for information about each individual fixture, it simply asks for the amount of fixtures and the individual properties of the fixture type. From this, the effect is generated.

For example, let's say we want to use a color palette inside a rainbow effect. If we were to take a palette per fixture, the color of each fixture could be different, so the effect would not know which color to take to generate the rainbow.

Palettes per fixture type can also be useful in circumstances where the amount of fixtures changes. Let's say we have 2 different fixture types with the same gobos but in a different order. We could create a set of gobo palettes so we only have to click one button to access the same gobo from both fixtures. If we had a palette per fixture, we would have to create the palette for each individual fixture. If we added more fixtures at a later date, these would then have to be updated. If we create the palette per fixture

type, then we can add as many fixtures as and when we want without the need to think about the palette!

### Generic Palettes

Generic palettes are primarily used for colors. They can be applied to any fixture and also any fixture type. For example, if you create a generic palette with the color "fire red" (picked from the color wheel), this palette can be used on any CMY or RGB fixture to turn the color "fire red".

If you are creating a matrix effect on a RECT, you must use a generic palette. This is because of the same reason that you cannot use a palette per fixture type on an standard easy time effect. Rects can cross several fixture types, they only know how to create colors, they know nothing about the fixture types. If you have a palette per fixture type with 2 colors stored on 2 different types of fixture, the RECT would not know which color to take to generate the effect.

### Pre-Recorded Palettes

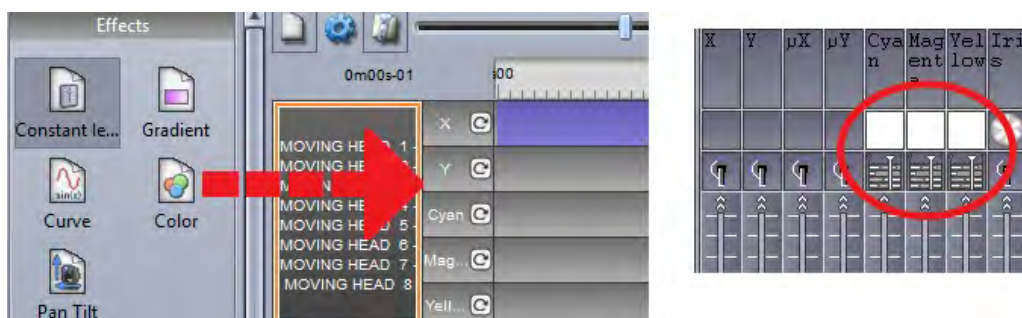
Pre-Recorded palettes are put together by the software depending on which fixtures you are using.



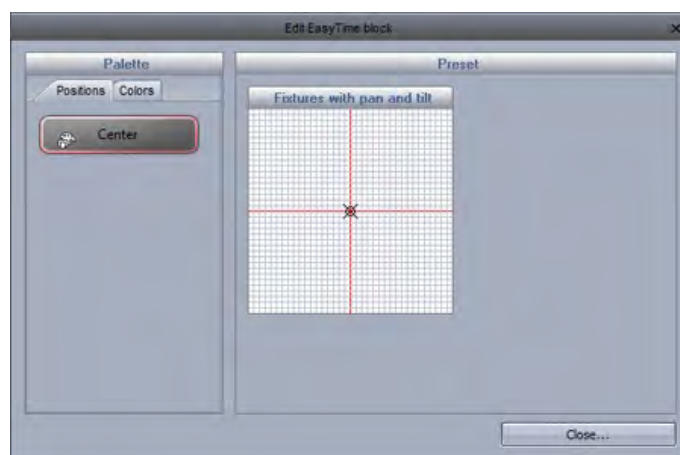
## IV EasyTime Effects

### 1. ConstantLevel

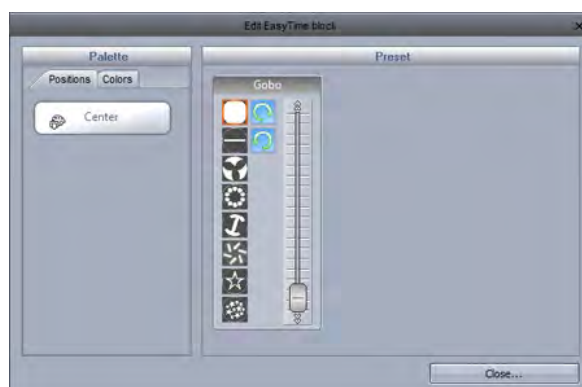
To use the EasyTime effects, first make sure that you have selected the relevant fixtures and have assigned the EasyTime mode. Constant Level is the most basic effect. Depending which type of channel you drag the effect onto, a different set of options will be available.



If the constant level effect is dragged onto a pan/tilt channel of a moving fixture, the position can be modified by dragging on the X/Y grid, or by choosing a palette if one has been created.



If an effect is dragged onto a gobo, iris or dimmer channel, you can select from one of the channel presets.

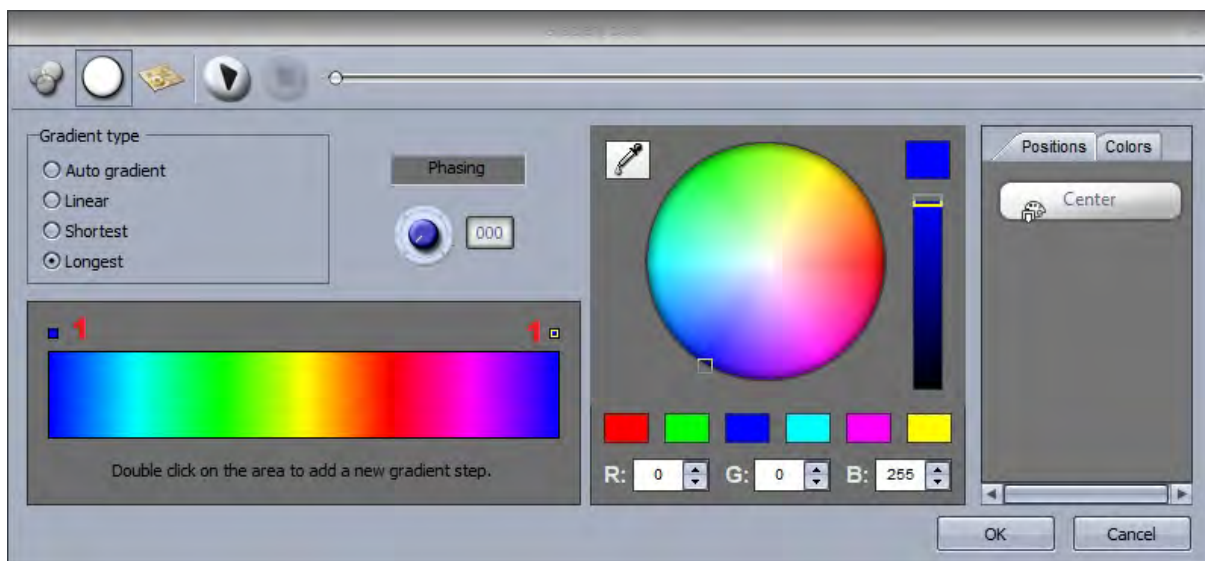




## 2. Gradient

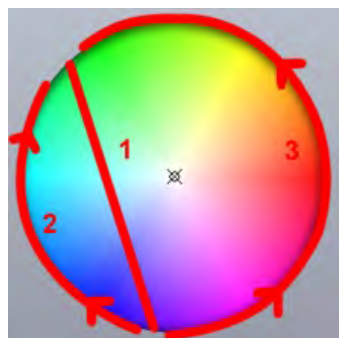
The gradient effect works in the same way as the static effect, however it allows you fade between DMX values (colors, positions..)

Start and end colors can be changed by selecting here (1). Colors can be added by double clicking inside the gradient.



The gradient type can be changed:

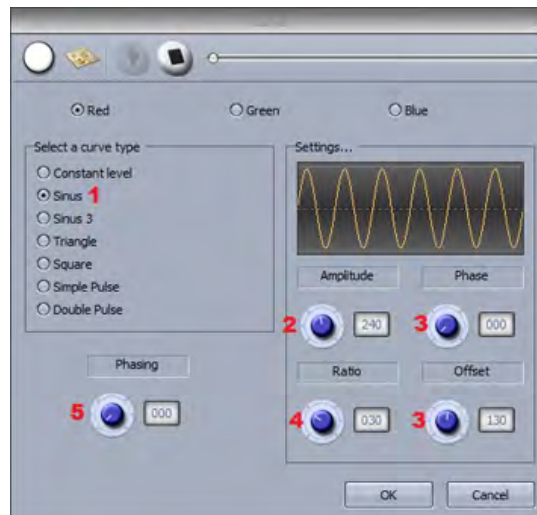
- Auto gradient: Automatically fades between the blocks before and after the effect
- Linear(1): Fades between 2 points on the color wheel (there will be a dip in the brightness as the marker passes through the center of the wheel)
- Shortest(2): Fades around the color wheel in the shortest direction
- Longest(3): Fades around the color wheel in the longest direction. This is useful when creating rainbow effects all around the color wheel by setting the start and end colors as the same.



### 3. Curve

With the curves effect, basic mathematical formulas can be used to adjust a channel. In this example, the red color level is being adjusted with a sinus wave. Curve types can be selected here(1).

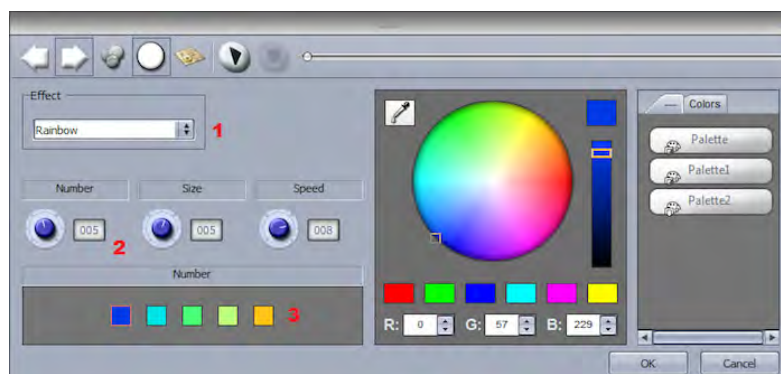
- Adjust the amplitude to stretch the wave(2)
- Move the wave backwards and forwards by adjusting the phase and adjust the offset to move the wave up or down(3)
- Change the frequency of the wave by adjusting the ratio, this will speed up your pattern(4)
- Add phasing here(5). Remember that for phasing to work correctly, the software must be told which order your fixtures are positioned. For more information on phasing, see the EasyTime Phasing topic.



### 4. Color

The color mixing effects tool does exactly this. It mixes colors together to create fantastic looking effects very quickly.

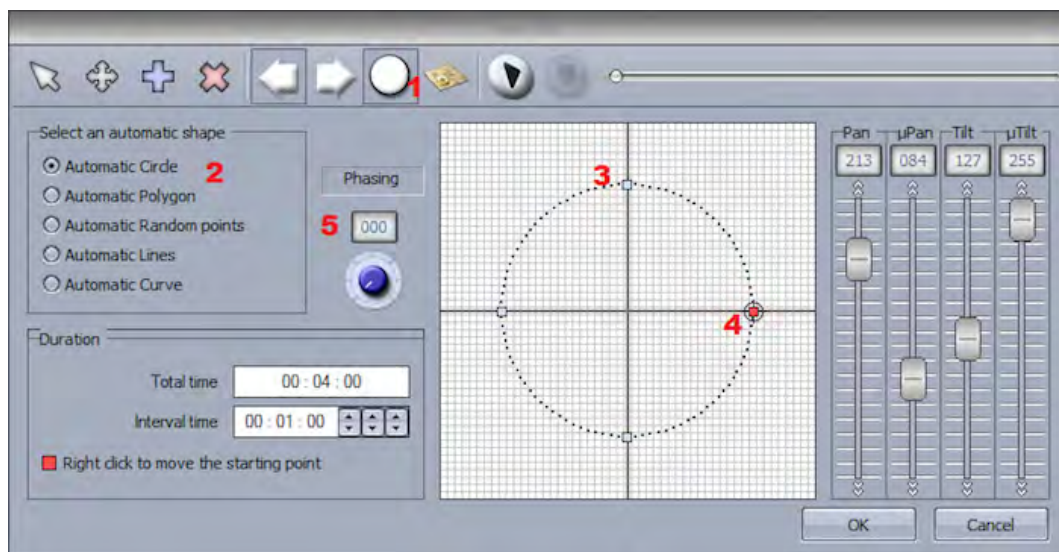
- Select a color effect type(1)
- Change the speed, size and number of colors here(2)
- To change the color, simply select the color and drag around the color wheel(3)



## 5. X/Y

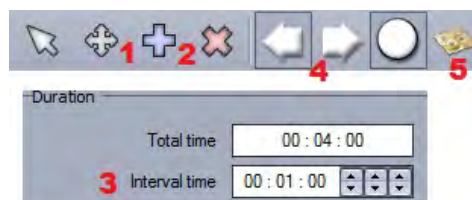
This effect is to be used on any pan or tilt channels of a fixture. It allows you to quickly and easily create moving patterns.

- Click here to switch the light beam on(1). This will not be saved as part of the effect but it will allow you to see your fixtures as you adjust the position
- Select the shape you wish to create here(2)
- Alter the shape of the circle by dragging the points(3)
- Right click to change the starting point(4)
- Phasing can be added here(5)



### Other functions

- Move the pattern(1)
- Add/delete points(2)
- Change the interval time between each point(3)
- Change the direction of the pattern(4)
- Re-arrange the fixtures order (see the gradient tutorial for more information)(5)



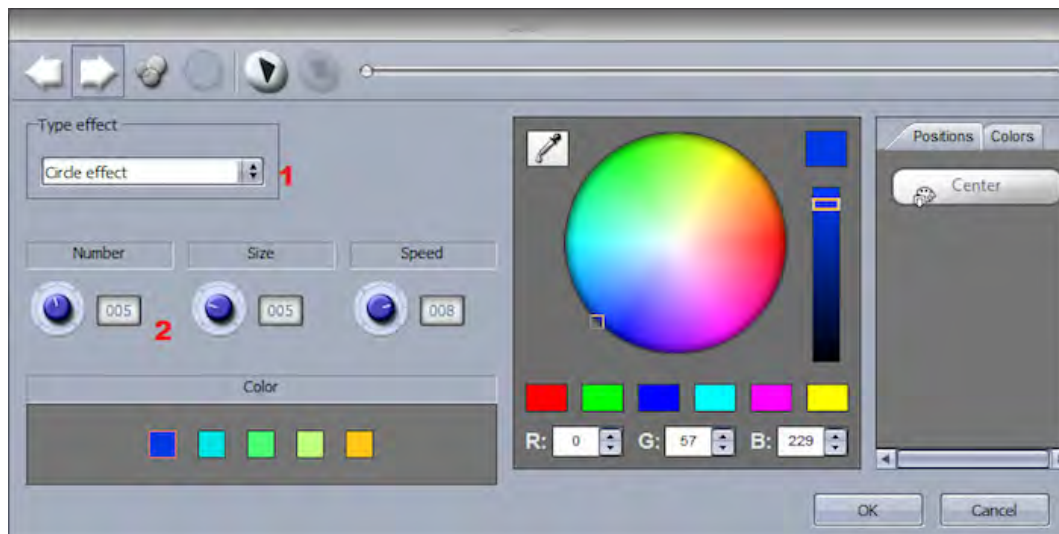
## 6. Matrix

NOTE: This effect cannot be applied to a selection of fixtures. This effect must be applied to a RECT. For more information on this, see the RECTS topic.

Matrix effects are similar to color mixing effects. However the effects are specifically designed for a matrix of fixtures.

Select an effect from the list here(1)

The number of colors, size and speed of the effect can be modified here(2)

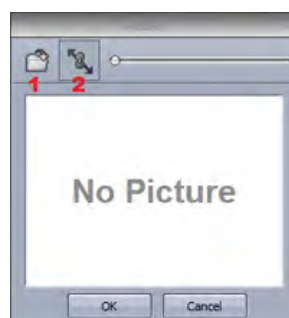


## 7. Picture

NOTE: This effect cannot be applied to a selection of fixtures. This effect must be applied to a RECT. For more information on this, see the RECTS topic.

Images can be inserted onto a matrix. The more fixtures you have, the higher the resolution and the better the image will be interpreted. It is often best to use simple images without too much detail.

Click here(1) to insert a bitmap, gif or jpg image. By default, the image will be stretched to fit the matrix. Click here if you want to keep the original picture proportions(2).



## **8. Gif**

NOTE: This effect cannot be applied to a selection of fixtures. This effect must be applied to a RECT. For more information on this, see the RECTS topic.

Gif animations can be inserted onto a matrix. The more fixtures you have, the higher the resolution and the better the image will be interoperated. It is often best to use simple images without too much detail.

Click here(1) to insert a gif animation. Click here(2) if you want to keep the original gif proportions, or if you would like the gif to be stretched to fit the matrix.



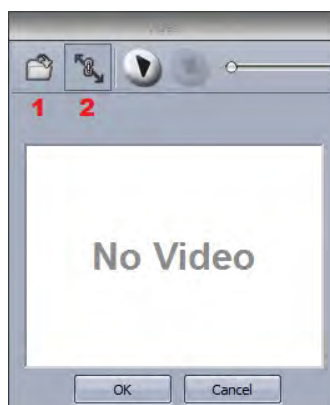
---

## **9. Video**

NOTE: This effect cannot be applied to a selection of fixtures. This effect must be applied to a RECT. For more information on this, see the RECTS topic.

Videos can be inserted onto a matrix. The more fixtures you have, the higher the resolution and the better the image will be interoperated. It is often best to use simple videos without too much detail.

Click here(1) to insert an AVI video. Click here(2) if you want to keep the original video proportions, or if you would like the video to be stretched to fit the matrix..





Note that not all AVI compression formats can be read by the software, so your video may need to be converted using media encoding software.

## 10. Text

NOTE: This effect cannot be applied to a selection of fixtures. This effect must be applied to a RECT. For more information on this, see the RECTS topic.

You can insert text onto your matrix with the text tool.

- Enter your text here(1) and click the T icon to modify the font(2)
- Click play to view your text(3)
- Change the position of your text by adjusting the vertical and horizontal offset properties(4)
- If you wish to have scrolling text, choose your direction here(5)
- You can change the scrolling speed here(6)
- Change the text and background colors here(7)

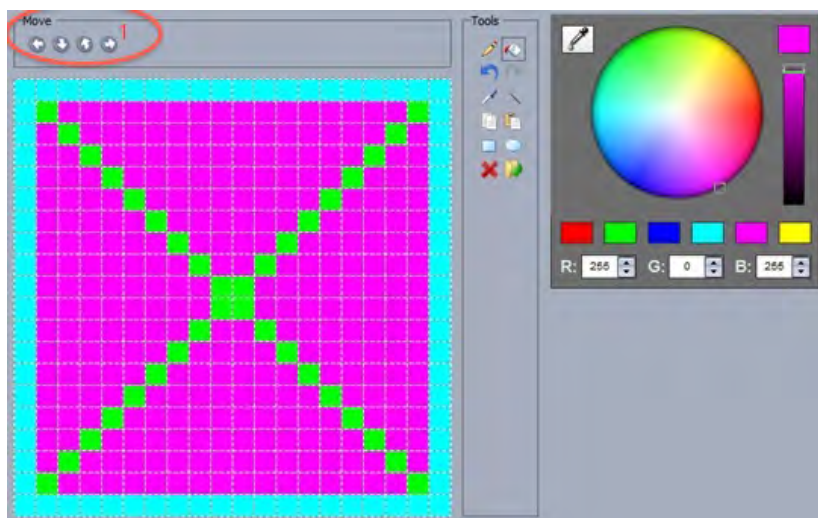


## 11. Color Manager

NOTE: This effect cannot be applied to a selection of fixtures. This effect must be applied to a RECT. For more information on this, see the RECTS topic.

The color manager allows you to easily draw an effect onto a matrix. An effect can be drawn onto a matrix by selecting a colour wheel and clicking the pencil tool. The color manager tools works in a similar way to your standard painting software package, with the ability to fill, draw lines, draw squares and insert images.

Images can be moved around the matrix here (1).



Several images can be saved if you wish to create an animation.

- Steps can be created here(1)
- Steps can be faded here(2)
- The time between each step can also be changed here(3)



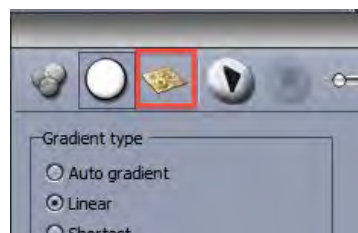
## 12. EasyTime Phasing

Phasing can be applied to several Easy Time effect types. The effect will look at the fixtures in DMX address order and depending on the value set on the phasing dial, the effect will start at a later point on each fixture.

Here is an example of phasing added to a gradient effect before and after the fixtures have been rearranged. If your fixtures are not positioned in DMX order, the phasing effect will not work correctly.



If you would like the effect to phase in a different order, click here to open the fixture order dialog.



Drag the fixtures on the left to change the order. To group two fixtures together, drag one of the fixtures on the left ontop of another, hold ctrl, then release.



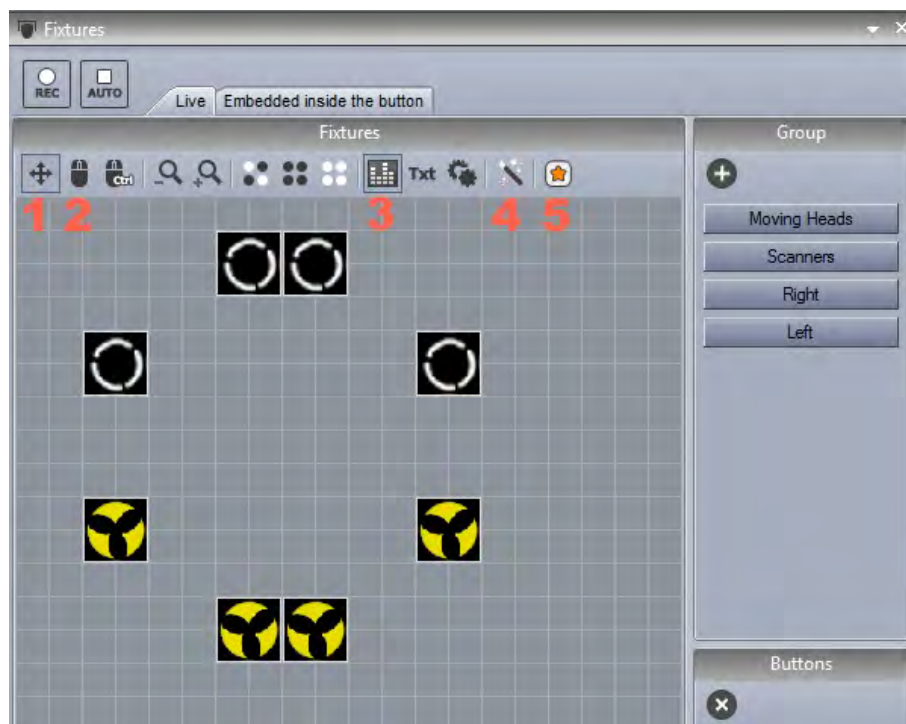
# V Dealing with Fixtures

## 1. Groups

### Selecting Fixtures

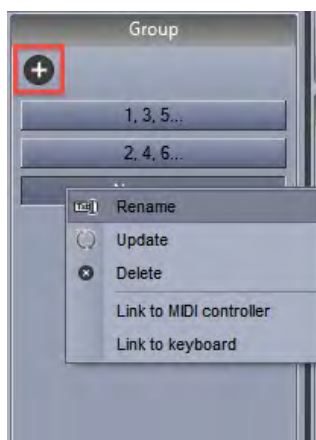
Fixtures can be arranged into groups for quick selection when controlling live and programming. Fixture groups can be edited within the fixtures window.

1. Fixtures can be moved by selecting here and then dragging.
2. Hold ctrl to select multiple fixtures. Multiple fixtures can be selected automatically by clicking here.
3. By default, an image of each fixture is shown with text. This can be changed to the currently selected gobo or iris here.
4. Moving each fixture can be time consuming when using large amounts of fixtures. Click here to position your fixtures into a shape.
5. A different fixture view will appear depending on the selected page. To always show the fixtures included on the master page regardless of the select page, click here.



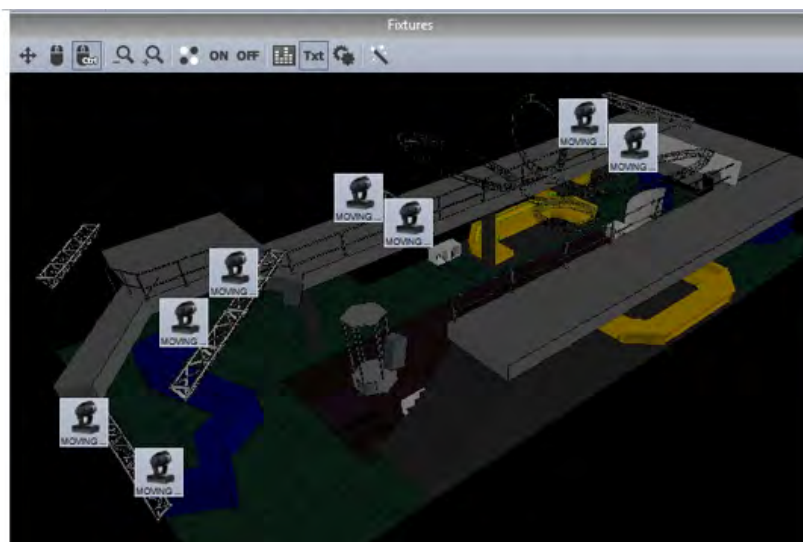
### Grouping Fixtures

Select the fixtures you wish to use in a group and then create a new group here(1). Right click to edit, delete or rename.



### Background

To select a background for the Fixtures window, right click and select "Background Image Settings". Images can be imported or copied from the 3D visualiser. Use the fader to change the size of the background image.

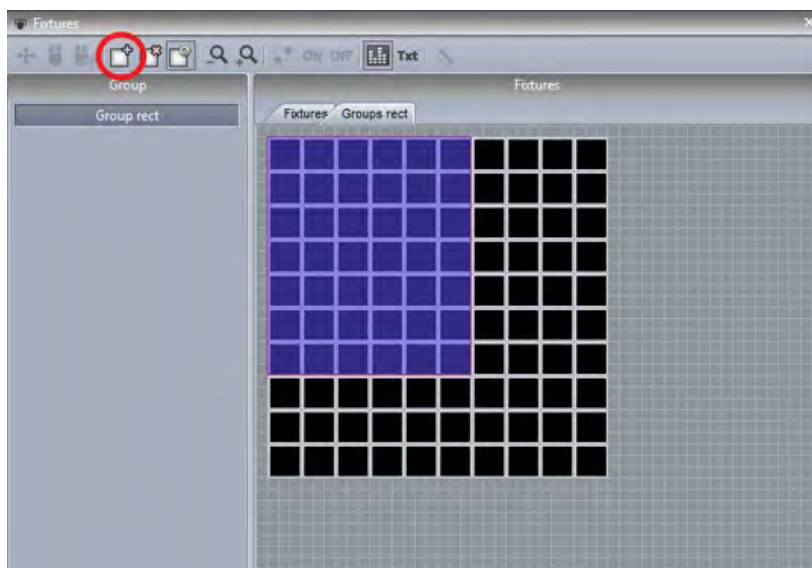




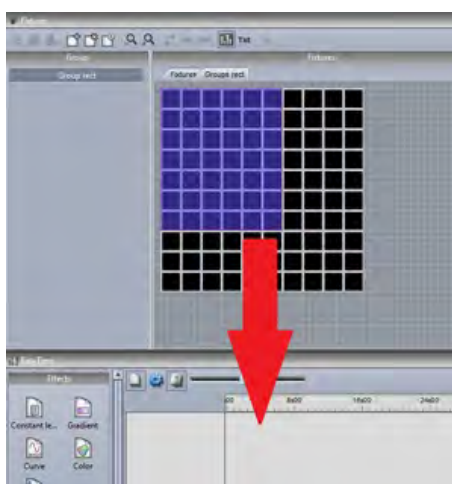
## 2. Rects

RECTS are an extremely powerful tool in Sunlite Suite 2, and very simple to use. Using EasyTime, we can apply an effect to a selection of fixtures, or to a RECT. A rect is a virtual zone where a sequence can be played. You can for instance, play several sequences on the same LED matrix at different positions using several rects.

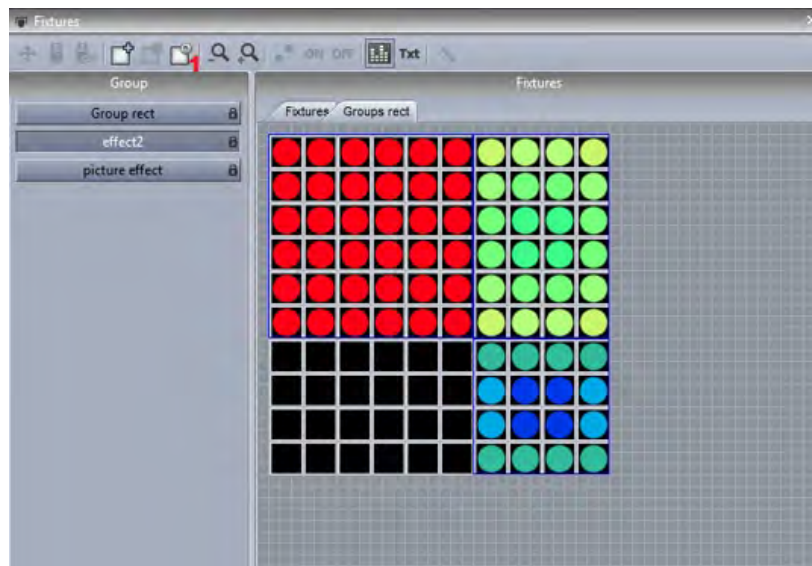
Rects can be created on the “Groups Rect” tab within the fixtures window of the button editor.



To apply an effect onto a RECT. Drag the RECT onto the timeline to create a new track. You can now drag your effects onto the timeline in the usual way.



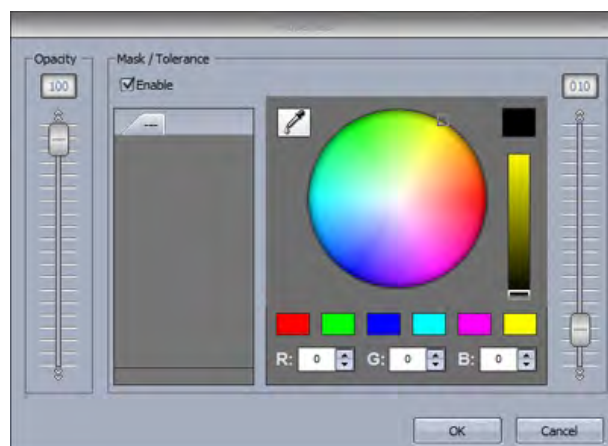
You can create as many rects as you wish. They can be resized and moved by selecting here(1).



### Rect Layers

Additional layers can be added to a rect timeline by right clicking and selecting “Add new timeline”

The opacity of a layer can be modified by right clicking the layer and selecting opacity. In addition to changing the opacity a mask can be added to the area, for example perhaps you would like all the black areas of a layer to be transparent. Use the fader on the right to adjust the sensitivity of the transparency.



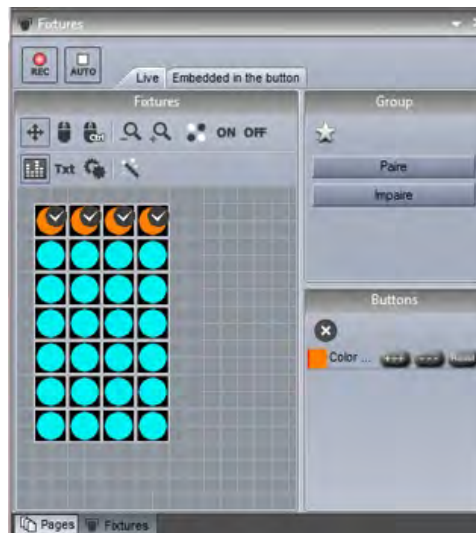
### 3. Live Control with Groups

#### Live Control with Groups

When scenes and switches are selected, all of the fixtures within the page respond to the button presses. Using the group's window, it is possible to have independent control of groups of fixtures.

Click Record then select the fixtures you wish to control. As you activate the scenes and switches, only the selected fixtures change. When you want to once again control all your fixtures, click Record. Record can automatically be released after each button press by selecting the auto button.

When fixtures are controlled live, temporary presets appear on the right. Fixtures can be added or removed from these temporary presets. This is done by making a new selection and pressing the +++ or --- buttons. To delete the temporary preset, click reset. To clear all live presets, click the cross.



A selection can be temporarily saved within a button, so that every time a particular button is selected, it is only applied to a certain selection of fixtures, regardless of what is selected within the group's window. A warning symbol is displayed in the corner of the switch to note that it will only apply its preset to certain fixtures. To disable this, click reset.



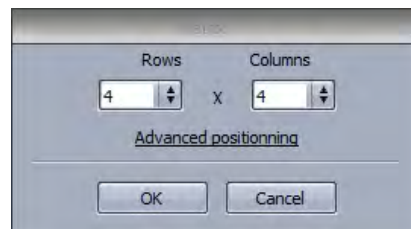
## 4. Advanced Positioning

### Advanced Positioning

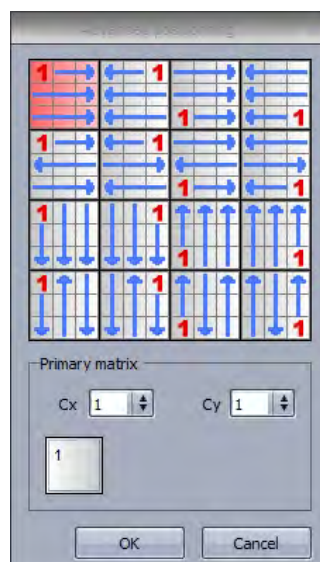
Sunlite Suite 2 offers many different ways to position your fixtures. Here are 16 moving heads. Click the wand to open the fixture positioning wizard. Select the matrix icon on the right to open the matrix editor.



Change the matrix dimensions here and click “Advanced Positioning” to re-order your fixtures within the matrix.



Change the position of a fixture in a matrix simply by dragging the fixture. It is also possible to change the order in which our fixtures are laid out, for example, right to left, or top to bottom.



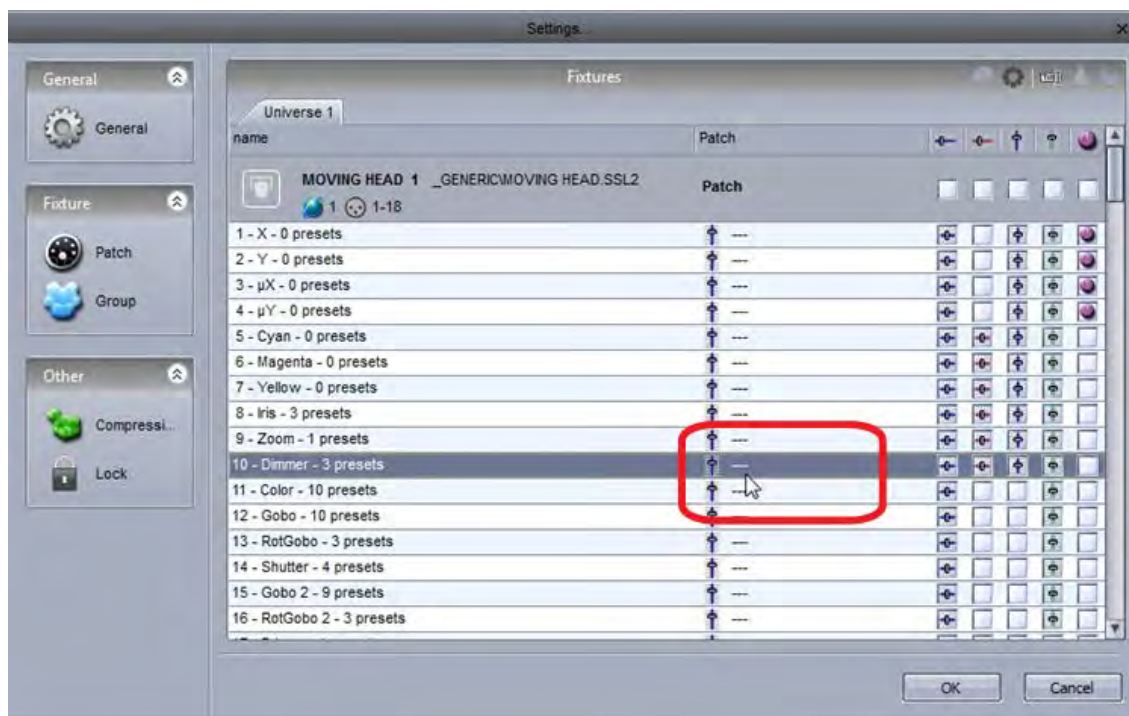
Imagine that you have a single fixture which consists of 4RGB devices positioned on a 2 x 2 matrix (12 DMX addresses). In some cases you may want to treat these 4 fixtures as 1 fixture. In this case, you can set up a primary matrix. Select the primary matrix dimensions and drag the fixture positions if necessary.

## 5. Advanced Patching

### Advanced Patching

Sunlite Suite 2 has many advanced patching capabilities. These can be found on the patch tab within the page settings window.

The patch of a channel can be modified by clicking in the patch area.

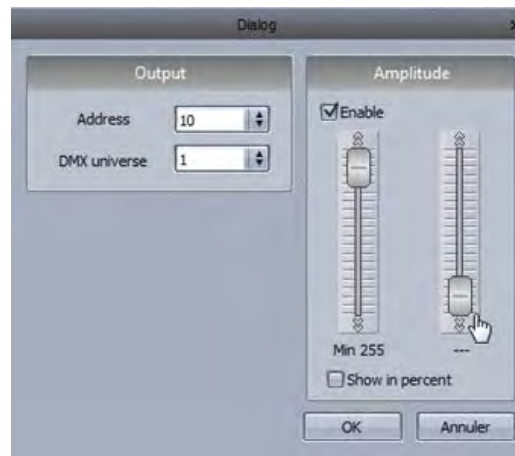


Click here to set up a new patch.



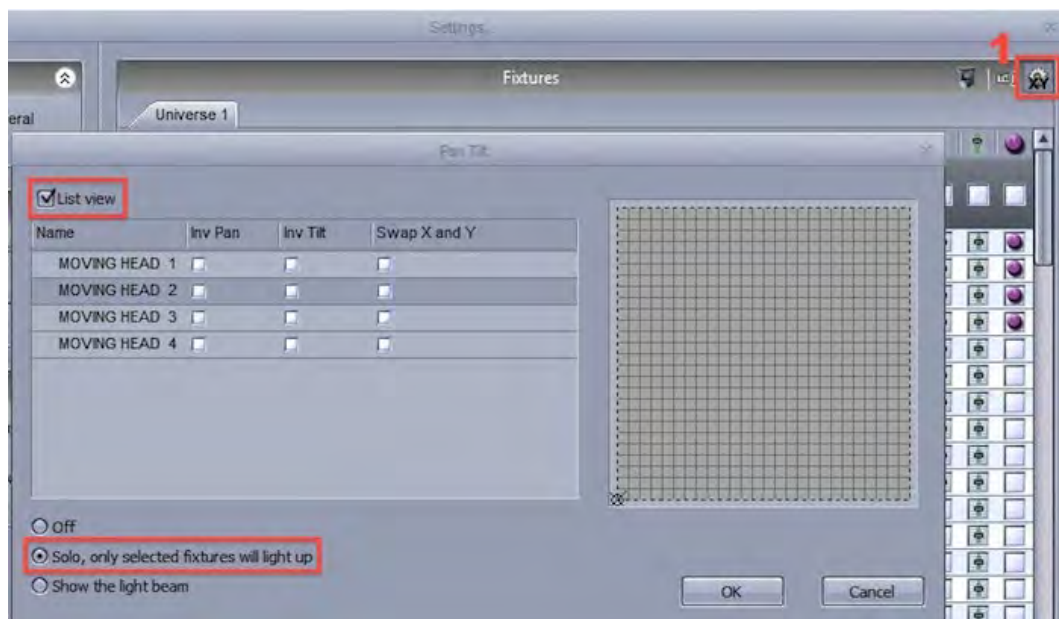


The output channel and universe can be set on the left and the minimum and maximum amplitude can be set to scale channel values down. Setting the minimum to 255 and the maximum to 0 will invert the channel. This can be useful when using unusual fixtures whereby the dimmer is at 100% when the channel is at 0.



It is possible to limit the highest pan and tilt value of a fixture. This is useful if you have a fixture in the corner of a room and you don't want the fixture to point at the wall. It can also be used to calibrate a fixtures moving sequences if not programmed with palettes.

- The pan tilt dialog can be opened by clicking here(1)
- Select your fixtures, then adjust the size of the square on the right
- Use the target to move the fixtures around the room, notice a red line is drawn to help you resize the square
- You can view your fixtures graphically by deselecting "List View"
- This dialog can also be an effective way to check if the lights are positioned correctly within the fixtures window by checking the "Solo" radio button



## 6. Multiple Universes

Sunlite Suite 2 supports multiple universes and interfaces. The universes and interfaces can be modified within the output tab of the starting parameters. The software is set to automatically select your interfaces by default. Uncheck auto detection to set this up manually. Products can be selected here(1).

Some interfaces have 3 universes. Each universe in the software can be patched to one of the interface outputs, or the DMX output universe can be swapped with a DMX input universe so the show can be triggered from a DMX desk(2).

If you have a Sunlite Suite 2 First Class interface connected, you can also output out of a variety of other products including the Sunlite Easy Stand Alone IP interface, the Sunlite STICK, or through an art-net protocol interface using the ethernet socket on your computer. You can change the order of your interfaces by dragging. You can delete an interface by dragging off the screen.



### ArtNet

If you have an Economy or First Class interface connected. You can output additional universes from your computers Ethernet socket using a protocol which sends DMX over a network. This protocol is called ArtNet.

Most of the time, your fixtures won't be able to read the ArtNet protocol and you will have to convert it to DMX using an ArtNet to DMX converter. These can usually convert several universes. We can provide a single universe converter with our SLESA-IP1 interface.

To set up ArtNet:

1. Connect your computer to a router with an Ethernet cable
2. ArtNet works on 2.x.x.x IP address range so make sure your computers Ethernet adapter and the router are set on this address range. The subnet mask needs to be set to 255.0.0.0
3. Connect your lighting fixture or ArtNet-DMX converter to your router

4. Connect the USB-DMX interface to your computer
5. Open Sunlite Suite 2 and navigate to the output hardware tab inside Software Preferences
6. De-select auto detection and select ArtNet from the combo box
7. Choose a Sunlite Suite 2 universe from the left combo box and an ArtNet universe on the right
8. If you are using multiple ArtNet universes with an ArtNet-DMX converter, remember to match the incoming ArtNet universes with the outgoing DMX universes on your converter

The following Suite2 interfaces are compatible with ArtNet:

Suite2-EC - 2 universes

Suite2-FC - 4 universes

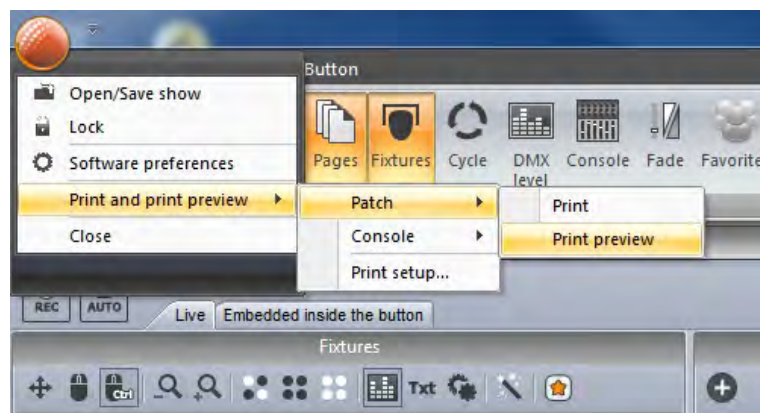
Suite2-FC+ - 40 universes\*

\*ArtNet physically supports up to 40 universes, however if you are planning a project with more than 20 universes, we advise that you contact us first.

---

## **7. Printing a Patch**

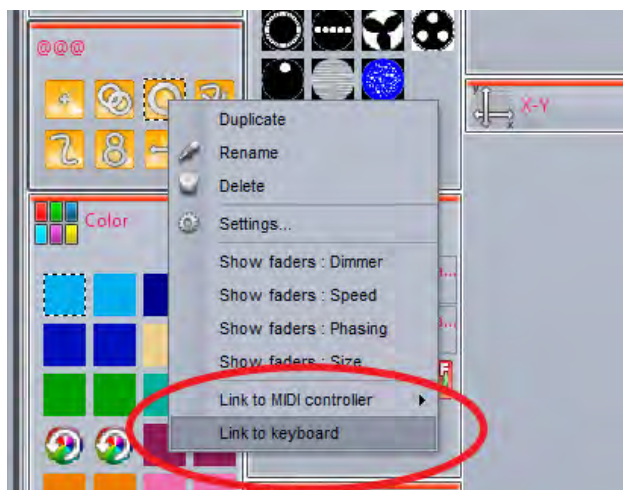
You can print a list of all the fixtures used in your show, their positions and DMX addresses. This can be useful when setting DMX addresses on the fixtures and can also be sent to clients or equipment hire companies.



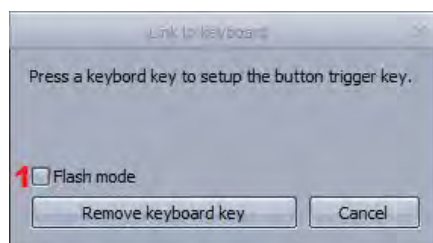
# VI External Control & Triggering

## 1. Keyboard

Buttons can be triggered from the computer keyboard. To assign a keyboard trigger, shift+right click a button and select "Link to Keyboard".



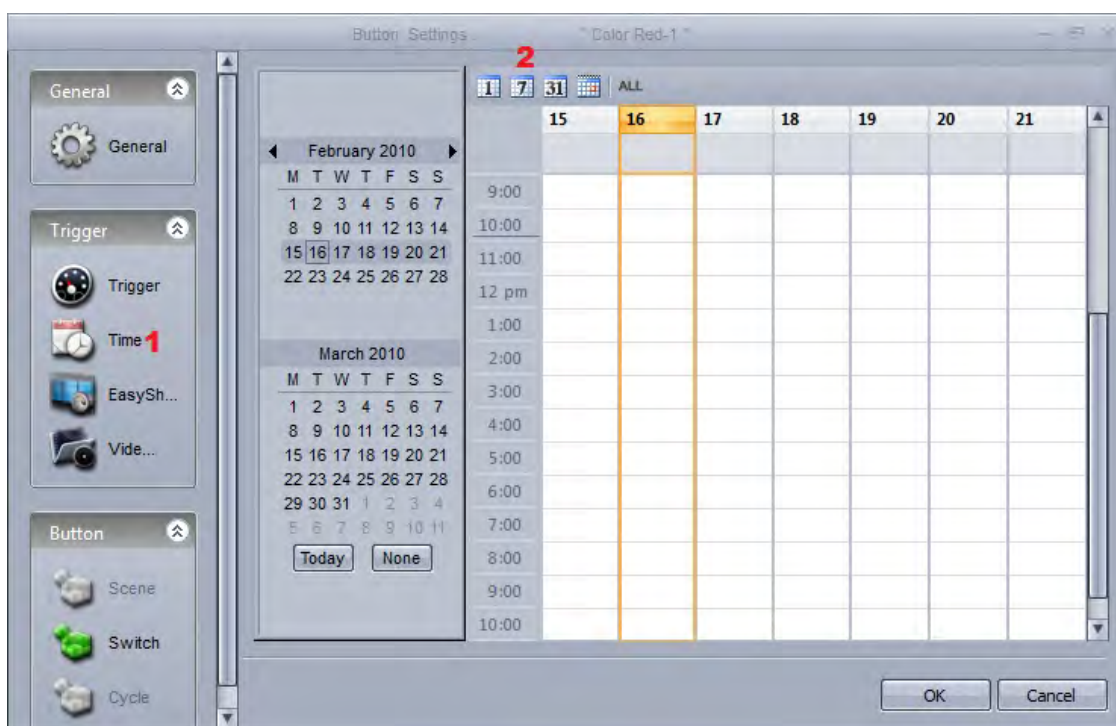
Hit the key you wish to use as a trigger. Click here(1) to set the trigger as a "Flash Trigger". When you press the key, the button will be activated and when you release the key, the button will be deactivated.



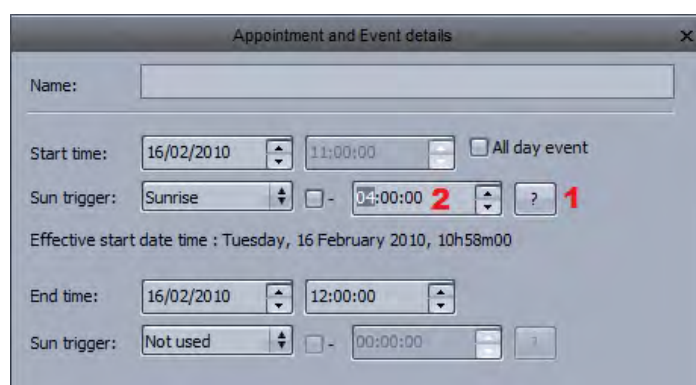
## 2. Date & Time

You can trigger a button by date and time. Select a button and open up the button settings. Select the Time tab(1). There are 3 calendar views to choose from(2).

Double click to set up a time trigger.



Scenes can be triggered at sunrise and sunset. A custom location can be assigned by clicking here (1) and the time of sunrise and sunset will be automatically calculated. A trigger time relative to the sunrise or sunset time can be assigned here(2). For example a scene could be deactivated 4 hours after sunrise.



Recurring events can be triggered daily, weekly, monthly or yearly. We can set up a recurrence range between two dates. For example, you may want to trigger a button at sunset every Saturday over the summer.



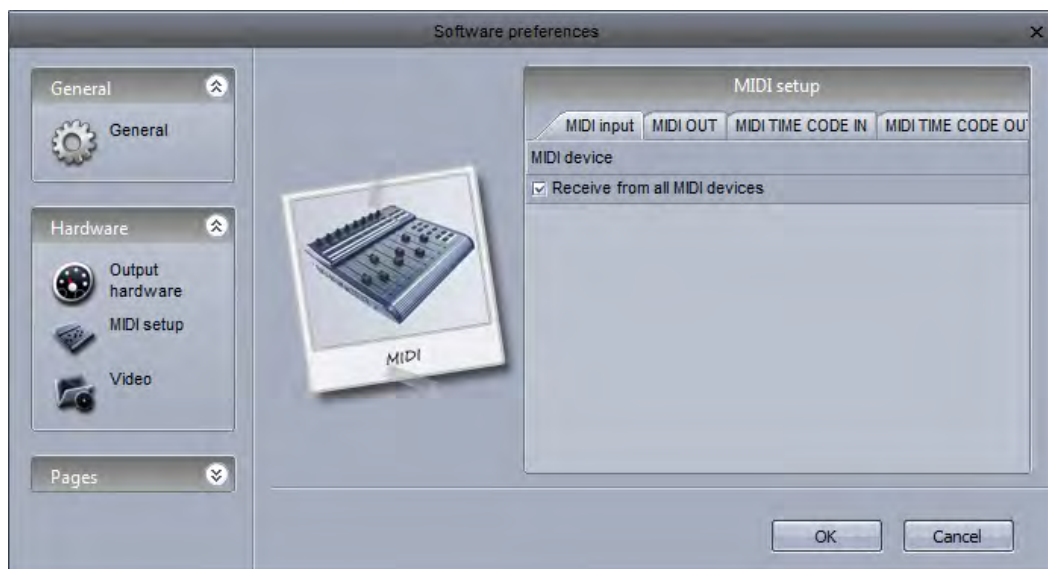
A trigger can be set to activate the button, deactivate the button, or toggle the button on and off every time the trigger is called.

### **3. Console (MIDI, DMX, EasyRemote)**

Almost everything in Sunlite Suite 2 can be controlled by almost any MIDI or DMX controller. You can use the console editor to create an image of your own controller. See the console editor topic for more information.

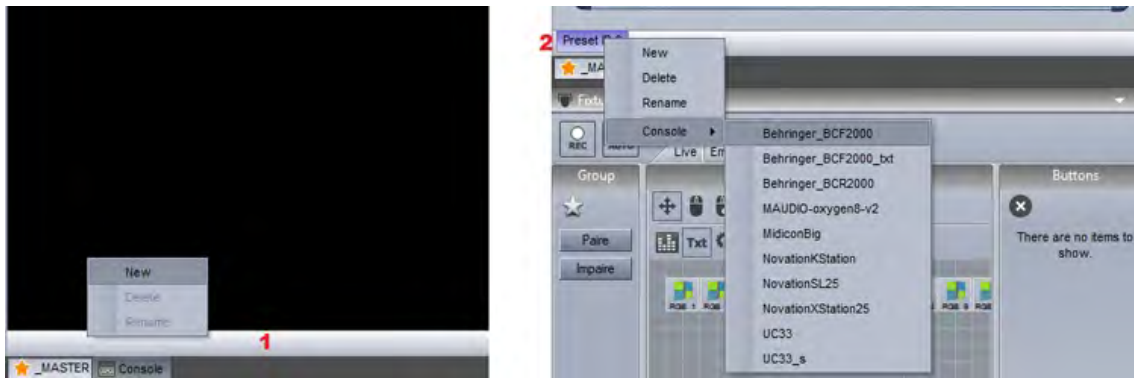


If you are using MIDI, the software first needs to be told which MIDI port to read from. This can be set within the Software Preferences.



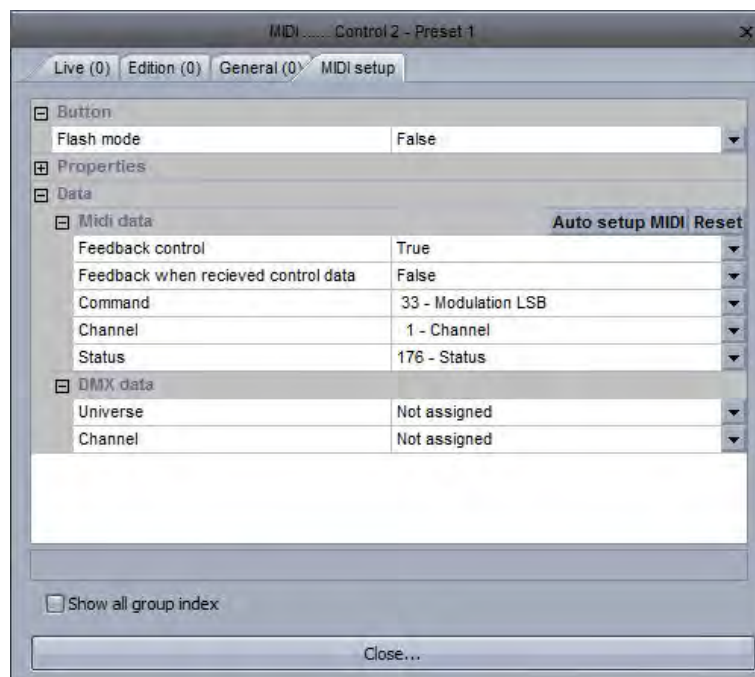
### Mapping MIDI controls to the MIDI console

Right click here(1) to create a new console preset, then right click here (2)to load your controller. If your controller is not listed, you will need to build your own console with the console editor, or map your controls to a similar console.

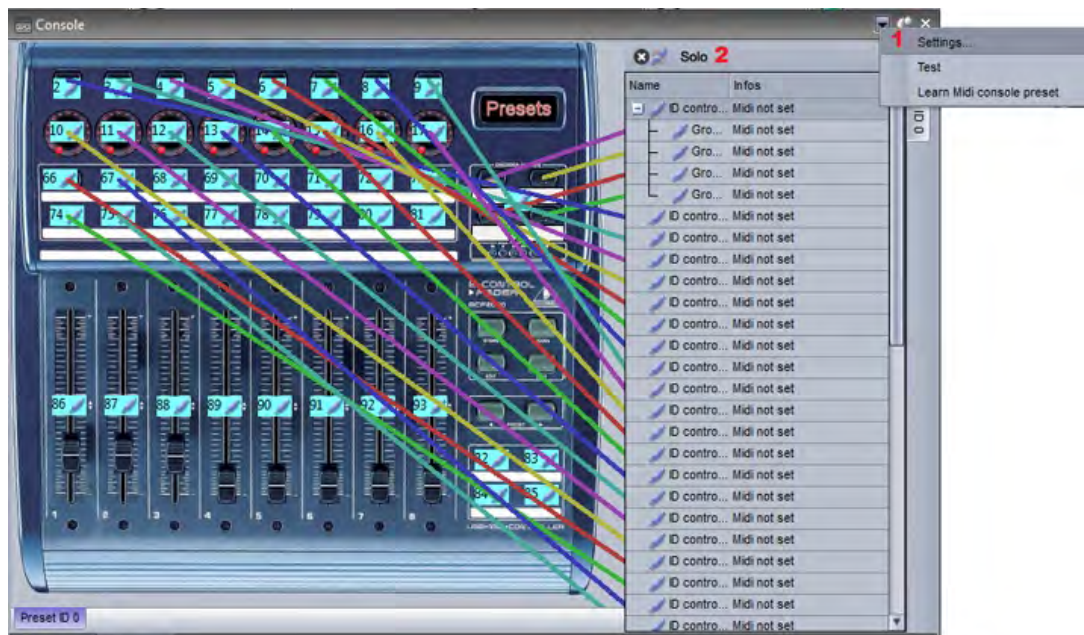


Many of the pre-built consoles are mapped, however in some circumstances you will need to map each button/dial/fader on your controller to the console in the software.

1. Right click the button you want to link to your controller
2. Select the Setup tab
3. Either enter the parameters in yourself or if you are using a MIDI controller, select "Auto Setup MIDI" and move the corresponding fader/dial/button on your MIDI controller



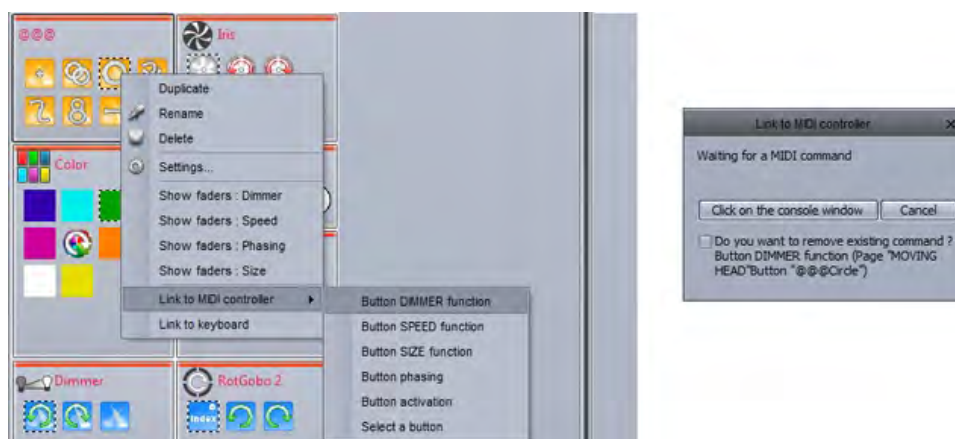
Each command and the corresponding fader can be viewed by clicking here(1). When all links are in view, the console can look confusing. Select solo(2) to view the selected control only.



### Assigning a MIDI command to a button

To assign a console command to a button:

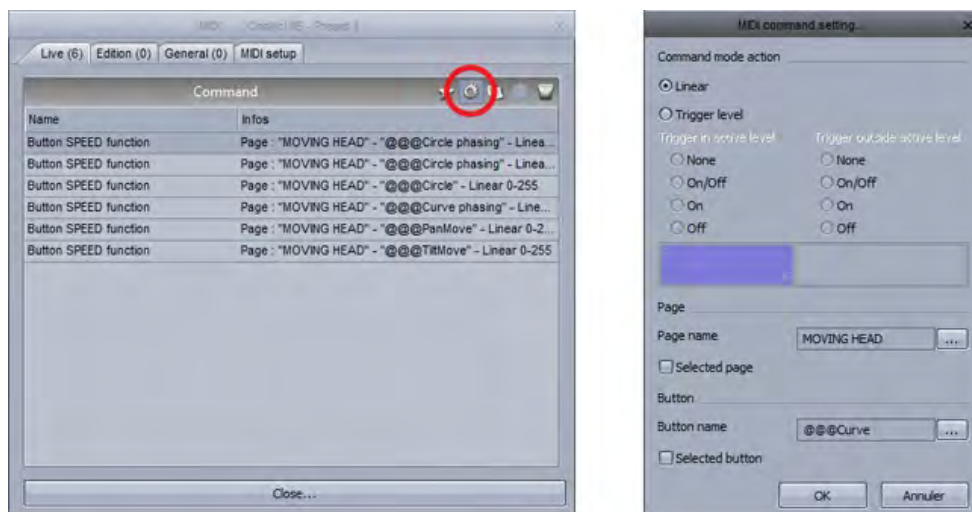
1. Shift+Right click the desired scene
2. Select "Link to Console"
3. Select the desired action (activate the button, change the dimmer of the button etc..)
4. Select "Click on the Console Window" and select the relevant button inside the console window. If you have a MIDI controller connected, move the relevant fader/button on your controller.



One command on the controller can be used to activate a variety of different commands within the software. For example, you could assign a dial to automatically control the speed of several movement buttons.

Commands can be edited by right clicking on the relevant button on the console. Here we can set a minimum and maximum value to trigger the command. In the example below, when the input value reaches 47, the sequence will be at maximum speed.





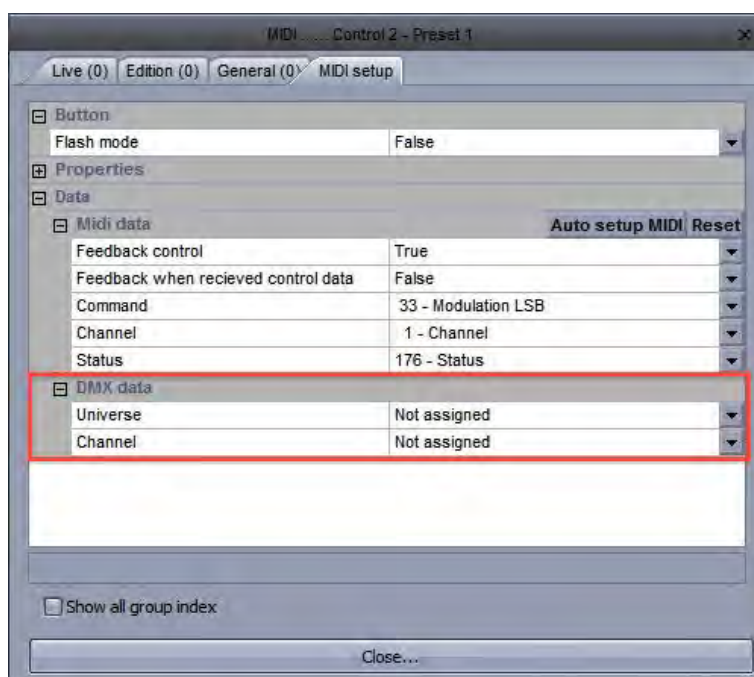
The console can also be used to control parts of the software's graphical interface. These commands can be found inside the Edit tab.

#### 4. DMX

Almost everything in Sunlite Suite 2 can be controlled by almost any DMX controller. You can use the console editor to create an image of your own DMX controller. See the console editor topic for more information. The controller can then be viewed within the console window.

Make sure you have a DMX input set up within the Software Preferences, see the Multiple Universes topic for more information.

Once you have created your console, each control must be mapped to a control on the console. To do this, right click on a console control, then select the DMX input universe and channel.





Once the DMX controller is mapped to the Console, you can map the controllers faders, dials and buttons to almost any software feature. See the Console topic for more information.

### Direct DMX Input Patch

A DMX input channel can also be directly assigned to a fixture channel within the button editor. Click [here\(1\)](#) to open the DMX input panel, then drag the desired DMX input channel over to the fixture channel.

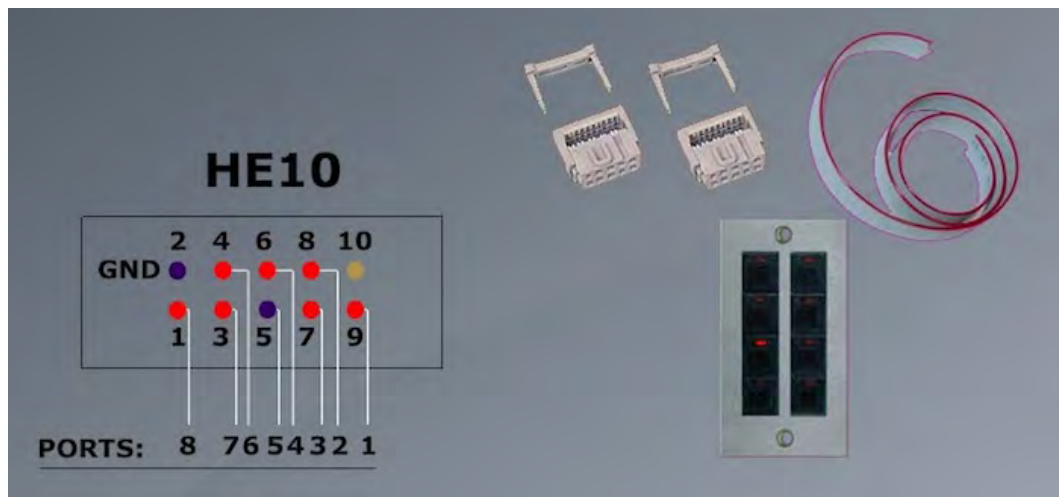


## **5. Interface Ports**

All Suite2 interfaces have 8 dry contact ports at the rear.

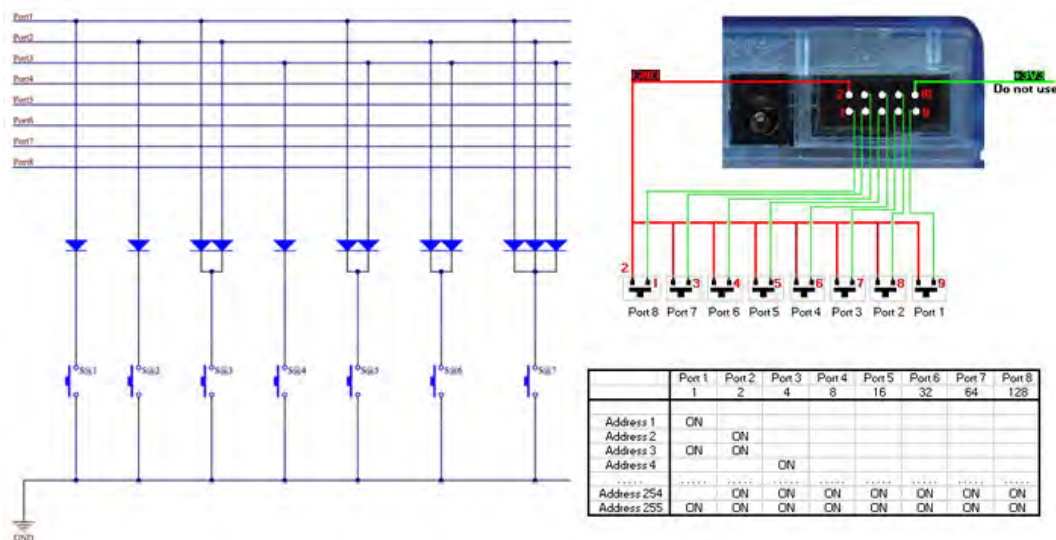


This socket is HE10 interface port socket. You can insert an 8 button touch-pad into this socket. This works by bridging each of the 8 trigger pins with the ground pin.



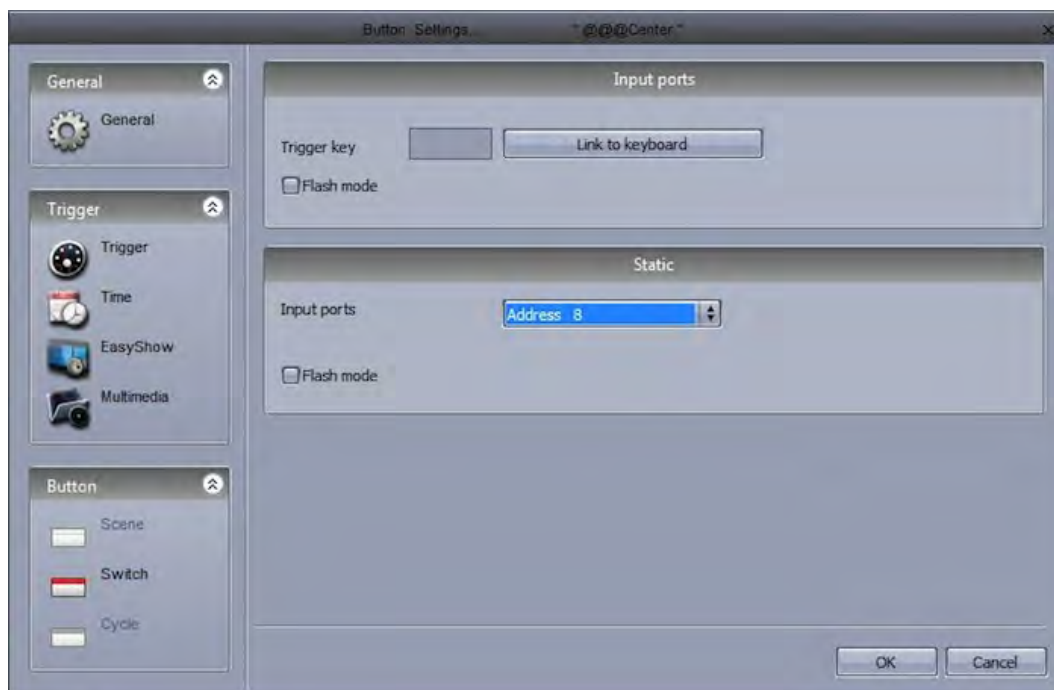
You can connect up to 255 buttons by combining the 8 ports in binary. For example, if ports 1, 2 and 3 are connected to the ground pin, this will trigger address 7.

One way of combining the ports from a dry contact switch would be to insert a diode between the switch and the ports. A generic purpose diode for small signals can be used such as the 1n4148.



Once the port connections have been set up. They can be assigned to trigger a scene within the scene settings "Trigger" tab. If you are addressing the ports in binary, be sure to select "Address 8" for example, instead of "Port 8".

You can also set up a port trigger from the previous/next buttons mounted on the interface.



## 6. MIDI Time Code (MTC)

MIDI Time Code (MTC) is a type of MIDI message created for synchronization purposes. You can use Midi Time Code to synchronize a Cycle with an external device such as a CD player, 3rd party video and sound software, or a SMPTE generator.

To use MIDI time code, you first need to make sure you have a MIDI interface connected to your computer.

Go to the general settings and select the MIDI setup tab. Select the device you wish to receive the Time Code from or send the Time Code to.



Once you have your MIDI Time Code device connected, select the IN button to begin receiving the Time Code signal. To send Time Code to another device whilst the Cycle is playing, select the OUT button.

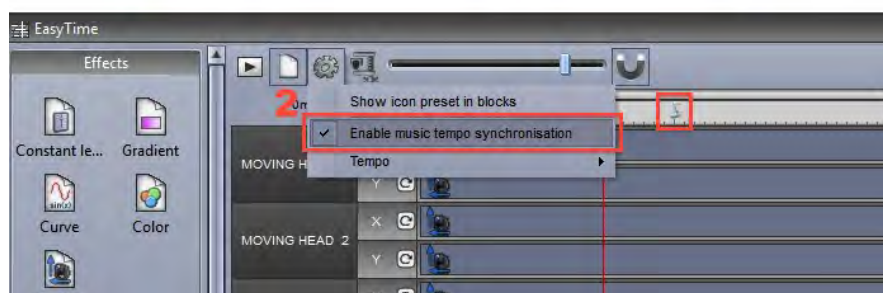


## 7. Audio

EasyTime and EasyStep sequences can be triggered by audio.

1. Click here to enable audio in an EasyStep sequence
2. Click here to enable audio in an EasyTime sequence

Notice that the timeline values change to music notes. These can be dragged to change where the playhead will jump on each beat.





## Audio Analysis

The audio analysis is a tool which sends a pulse to any audio enabled EasyStep or EasyTime sequence. The audio analysis works in 4 different modes:

Manual: Choose a manual BPM from the combo box

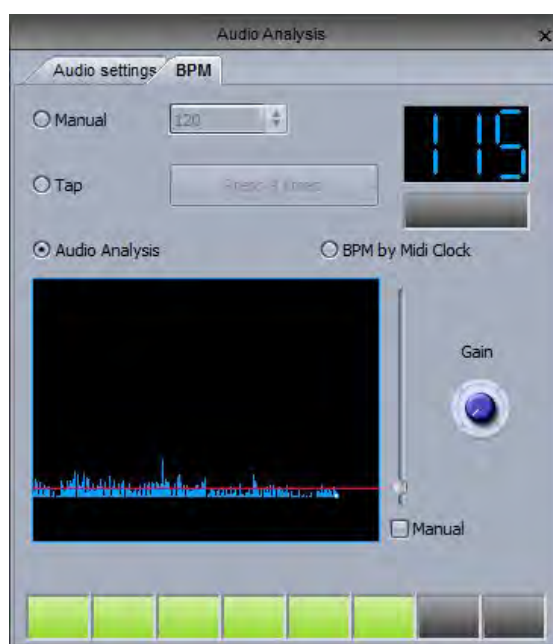
Tap: Tap out a BPM by pressing the tap button

Audio Analysis: Calculates a BPM from an incoming audio signal. By default, the threshold is set automatically, check "Manual" to set the threshold yourself appropriate to the style of music

BPM by Midi Clock: Detects a midi clock signal sent from high end DJ software and DJ mixers. Note that you will need to select a midi device from the Software Preferences first

BPM by Midi clock is usually the most accurate form of BPM detection because DJ software will analyse the BPM from the audio file before it is played.

Note: if you cannot see an audio input when using the audio analysis, make sure the correct recording input is selected on the "Audio settings" tab. Also check that the correct input is set up in the windows control panel->sound. Adjust the Gain dial to increase the input signal.





## **8. OLED Keypad**

The main problem with keyboard and MIDI triggering is that unless you have your keyboard fully labeled, it is easy to forget which keys you have assigned to which scenes without searching the screen for your keyboard assignment.



There are now several OLED keyboards on the market which can be used with Sunlite Suite 2. Art Lebedev produce a variety of OLED input devices including the Optimus Maximus, Mini Three and Aux.



A tutorial on using the United Keys 9 button OLED keyboard with Sunlite Suite 2 can be found [here](#).

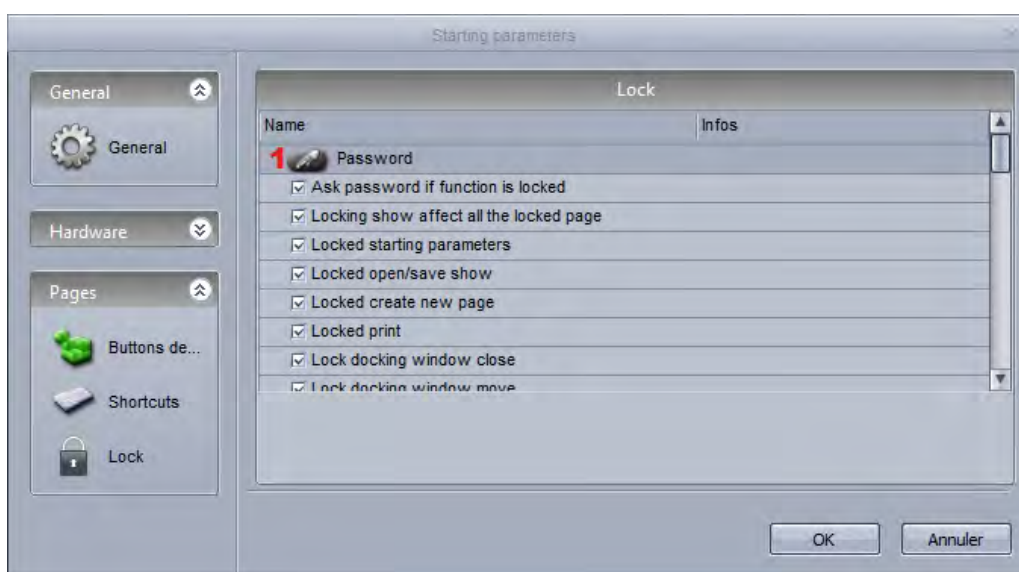


## VII Other Features

### 1. Access Privileges

Various parts of the software can be locked and password protected. The access privileges can be set within the Lock tab of the Software Preferences.

Click [here\(1\)](#) to set a new password.



Click the lock key to lock the selected functions. Notice that a lock icon appears next to each locked function. To unlock the show, hold ctrl and select the lock key, then enter the password.

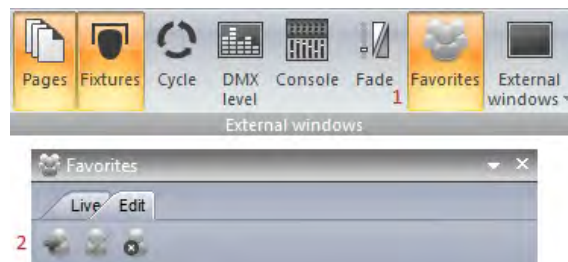


### Forgotten the password?

The password is stored in the Global Show XML file. This can be located by navigating to the Datalight folder in the Suite 2 root directory, selecting your show folder and opening the Global XML file.

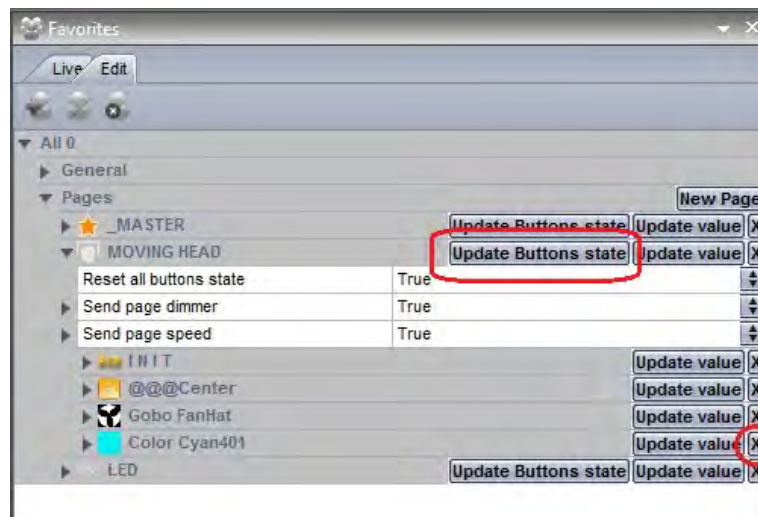
## **2. Favourites**

In Sunlite Suite 2, you can set favourites. A favourite is like a macro. It allows you to save and recall a software state. The favourites panel can be opened here (1) and a new favourite can be created here (2).



Favourites can be modified by selecting the "Edit" tab. Favourites are organised by page. In the example below, the "blue" color preset can be removed from the favourite by selecting the X.

To update the state of a particular page, select the buttons you wish to include within the favourite, then select "Update buttons state".



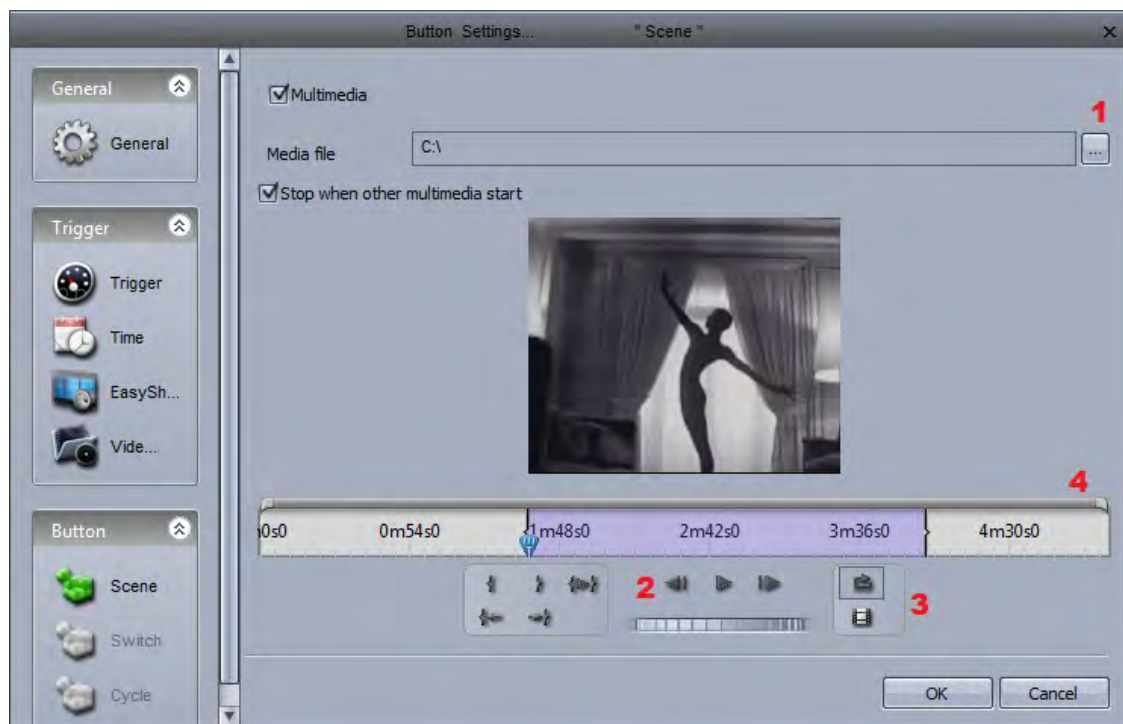
Favourites can also store window positions, this can be done by selecting "Update Value" on the "Send Windows Positioning" parameter.



### 3. Multimedia

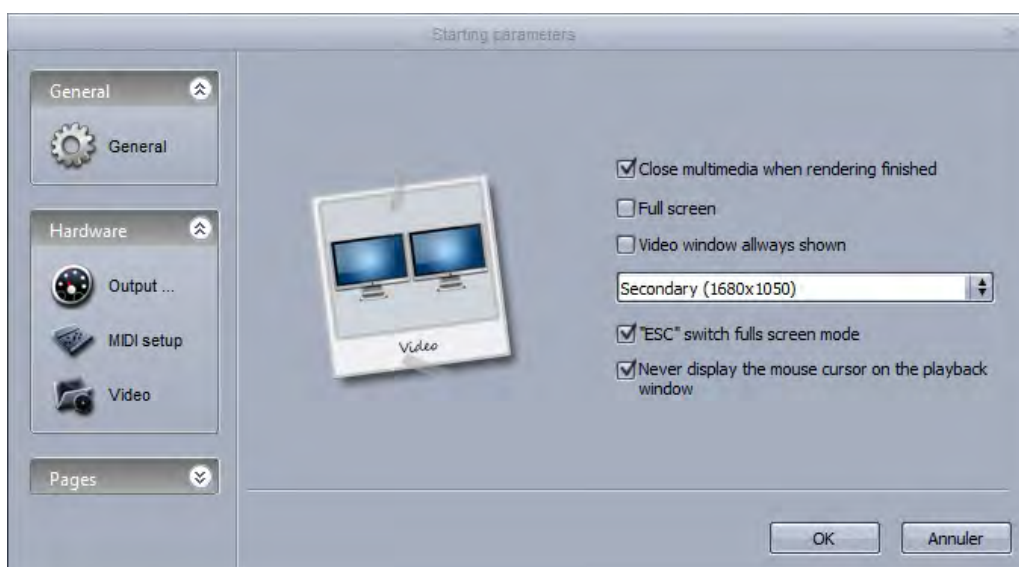
Sunlite Suite 2 is capable of playing audio and video files (if encoded correctly). To insert an audio or video file, select a button, open the button settings and select the Video tab.

- Insert the media file here(1)
- Here(2), we can test our video, and adjust the start and end markers
- Switch between video and sound here(3), and loop your video here
- Drag here (4) to zoom in/out of the timeline



If you wish to output the video out of a secondary monitor, this can be set up within the general settings. You may need to restart the software before some of these settings are applied.



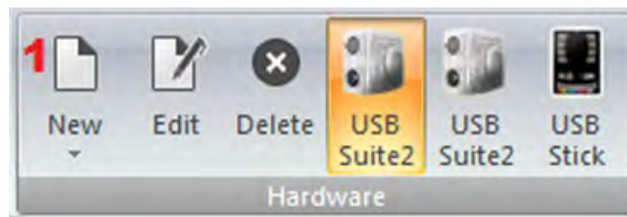


#### 4. Stand Alone

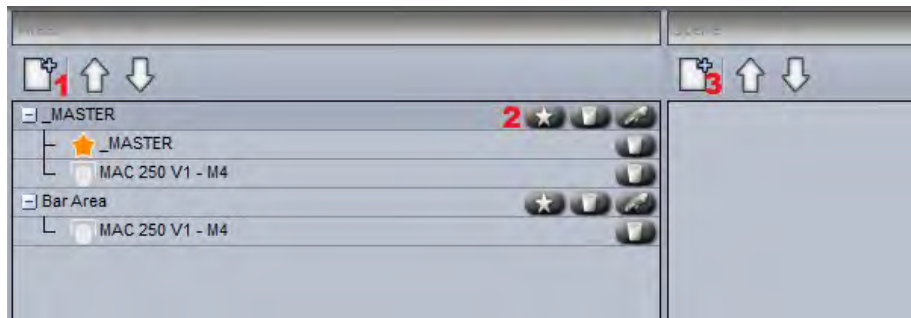
You can save SCENES and SWITCHES into the stand alone memory of your interface so they can be played without a computer. It is advisable that you back up some of your SCENES into the interface in case of a computer crash. The Stand Alone editor can be accessed here.



The memory of several interfaces can be written simultaneously, click here(1) to add an interface.



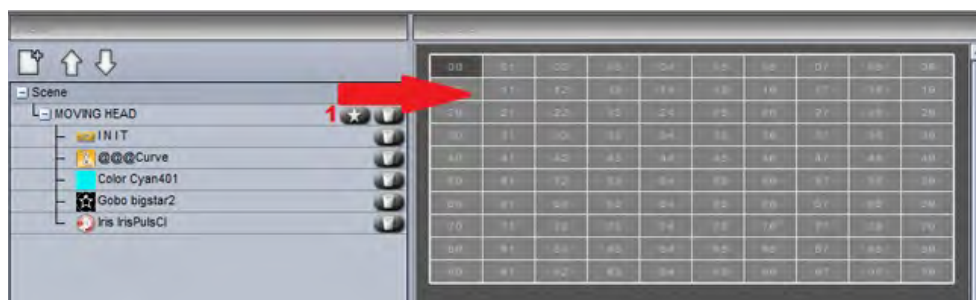
Each interface has 5 areas. New areas can be created here(1). Pages can be assigned to an area by clicking here(2). New stand-alone scenes can be created here(3).



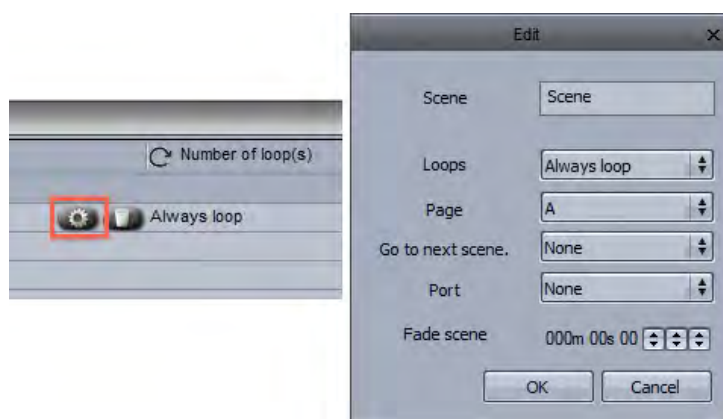
### Creating a stand-alone scene

A stand alone scene can contain a combination of SCENE and SWITCH buttons. Click here(1) to insert a new button.

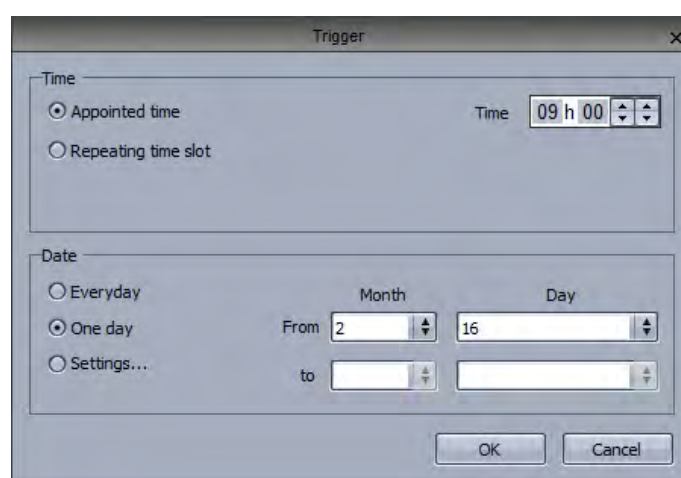
Drag the scene from the scenes panel and onto one of the 99 scene spaces. Make sure the correct area is selected.



Once your stand-alone scene has been dragged onto the interface, other scene settings such as looping and port triggering can be edited by selecting here(1).

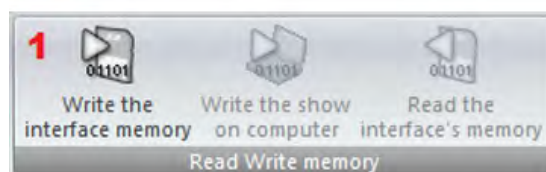


The interfaces have an internal clock and calendar so the scenes can be triggered by date and time. The date and time triggers can be assigned within the calendar tab. Select the scene from the left and drag it over to the calendar. Timing can be modified by double clicking.



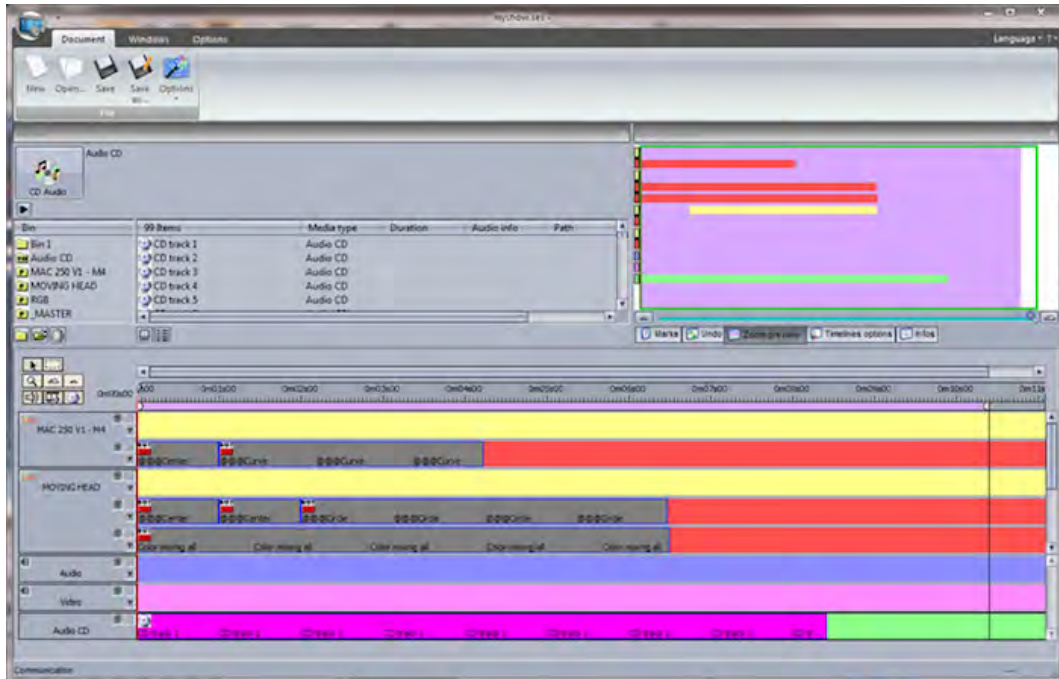
Note: the time triggers created within the button settings are not applied in stand-alone mode.

Once the stand alone scenes have been created and assigned, the memory can be written here(1).



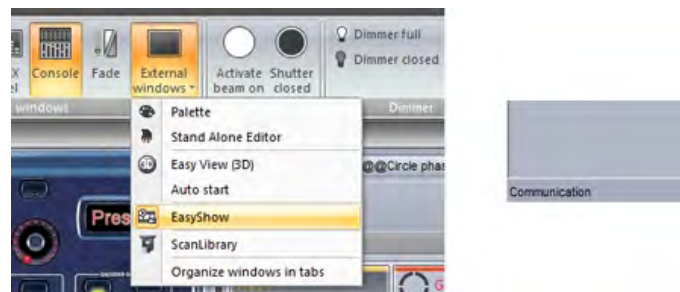
# VIII Easy Show

Easy Show is included within the Sunlite first class package. It allows you to synchronize your Sunlite buttons with audio and video. Programming is performed using timelines, like many popular audio and video editing software packages. Easy Show is quick and simple. Adding lighting scenes is as easy as dragging and dropping from Sunlite Suite, and dropping into Easy Show.



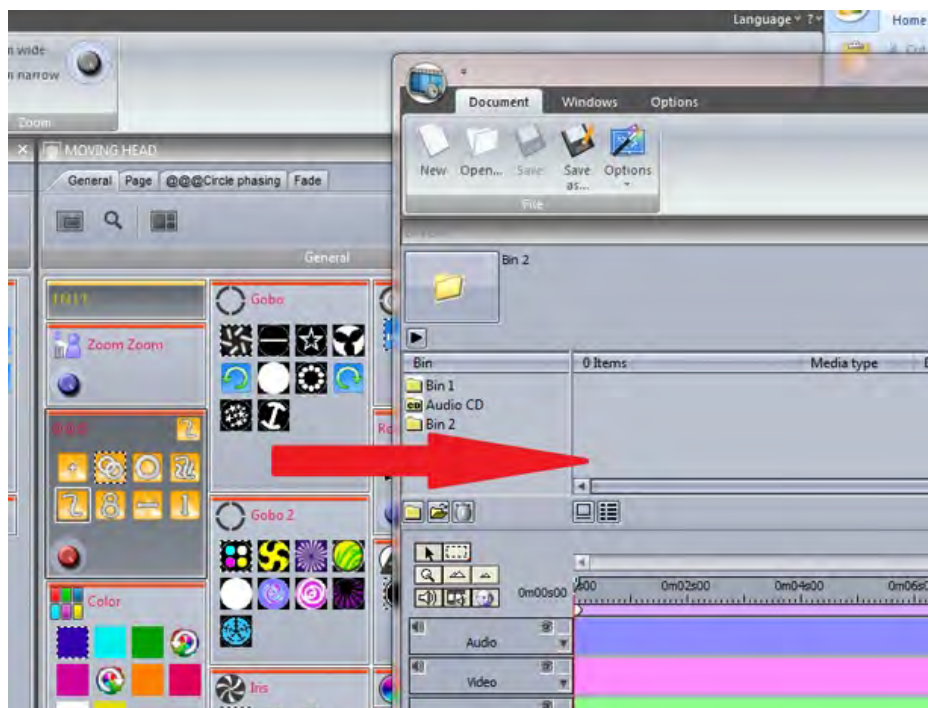
## 1. Getting Started

Easy Show can be opened by clicking here. Check the status of the Easy Show communication in the bottom left corner of the window.



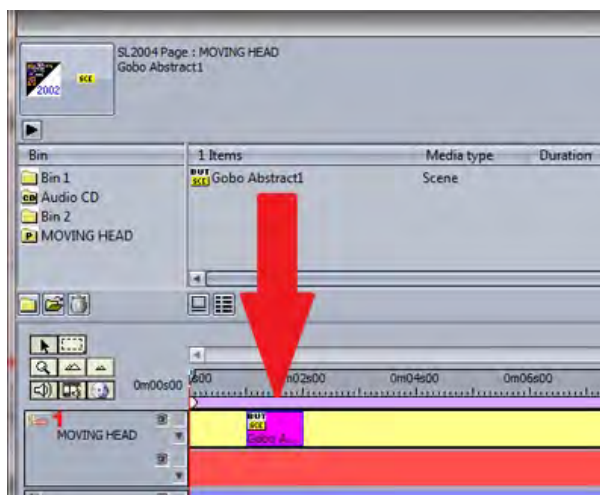
To add a button to Easy Show, simply ctrl+right click and drag the button from the Sunlite Suite 2 window to the clip bin inside the Easy Show window.



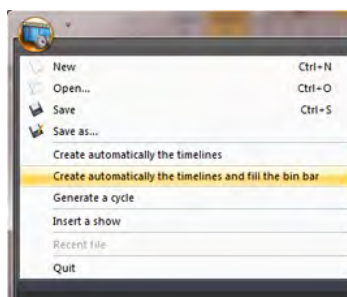


A new track is automatically set up for the page. The scene can now be dragged onto the new track.

Notice that the track is split into two sections. The top section is for SCENES and CYCLES and the bottom section is for SWITCHES. If you need to have more than one Switch activated at a time, click [here\(1\)](#) to create a new Switch timeline.



To automatically create a track for each page of your show and to fill the bins with all your lighting buttons, click [here](#).





## **2. Creating Timelines Manually**

To create a timeline manually, you first need to create a bin. The bin is where you store your lighting scenes, videos or audio files. Each bin corresponds to a track. You can have as many bins as you like for your multimedia files, but you can only have one bin for each page of fixtures. To create a bin, click [here](#)(1). To import multimedia files to your new bin, or to import a button to a new page bin, click [import](#)(2).



You can import multimedia files or lighting effects from Suite 2 into a bin.



## **3. Timeline Options**

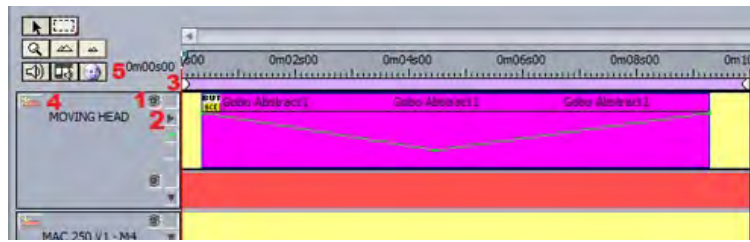
As seen in the previous topic, the timeline is where sequences are built. Clicking [here](#)(1) will hide the track from Suite 2.

Tracks can be expanded [here](#)(2) for automating the speed and dimmer functions, see the next topic for more information on how to do this.

Click [here](#)(3) to lock a track. This will prevent you from accidentally moving the contents.

Extra tracks can be added [here](#)(4) if you wish to have more than one switch activated at a time.

Show and hide multimedia tracks [here](#)(5).



If you need to move more than one scene at a time, click the block selection tool here(1).

All scenes on a particular track can be selected, or all the scenes in the whole sequence(2).

Zoom in and out of the timeline here(3).



#### 4. Other Options

Zoom Preview- This window allows you to easily navigate around the timeline



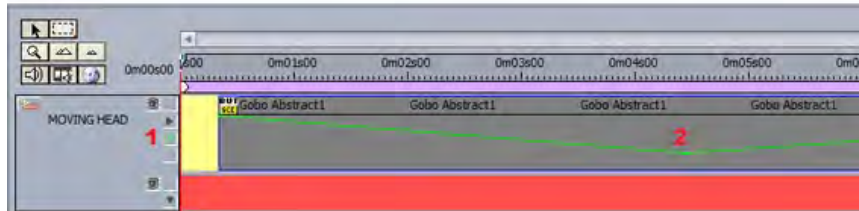
Undo- This window contains a list of our recent actions making it very simple to go back if a mistake has been made.

Infos- This area shows information on the currently selected block. Click here(1) to enable the dimmer and speed functions.

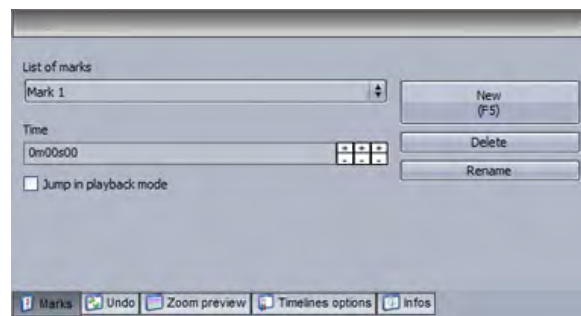


Once the dimmer and speed functions are enabled, click here(1) to edit. To change the brightness of the lighting throughout the scene, draw a line here(2).

Additional points can be created by clicking on the line, and deleted by selecting and dragging away from the track.



Marker points can be added to a timeline. These can be used to stop playback. If "Jump in playback mode" is selected, playback will continue when the marker is reached.



If you are using video, you can view it in full screen by hitting F1.

## 5. Triggering

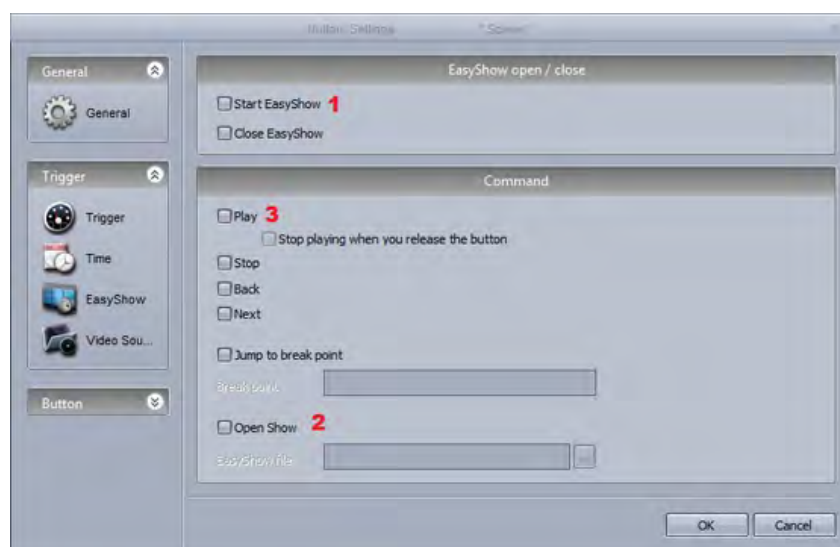
In addition to the playback controls in the Easy Show Monitor window, sequences can also be triggered from buttons in Suite 2. Create a new scene or switch and go to the button settings. Select Easy Show.

Clicking here(1) will start Easy Show when the button is selected.

Open a new show here(2).

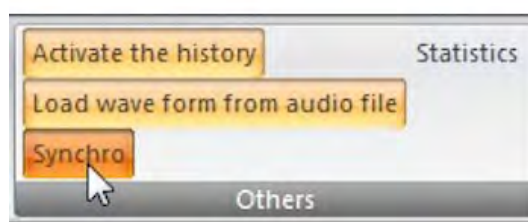
Shows can be played here(3).

Other commands include stopping the show and jumping between markers.



## 6. Synchronization Options

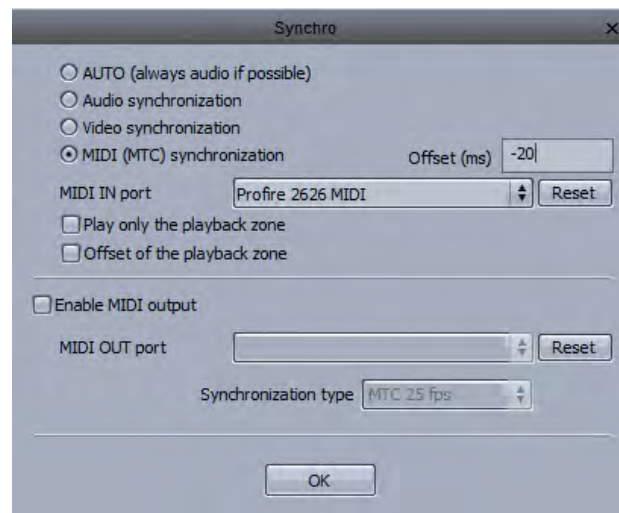
Easy Show has several synchronization options. The Synchro dialog can be found here.



A synchronization device can be chosen here:

- Audio: The timeline will always be synchronized with the audio time. If the audio were to skip (for example, if a higher priority process took place), the timeline would also skip ensuring your lighting is always perfectly timed to the audio
- MIDI Time Code: Timelines can be synchronized with MIDI Time Code (MTC). Ensure that a MIDI interface has been connected to your computer before opening Easy Show. An offset can be set if delays are experienced

Other MIDI Time Code devices can be synchronized from Easy Show. Select "Enable MIDI output" and select the desired MIDI output device.



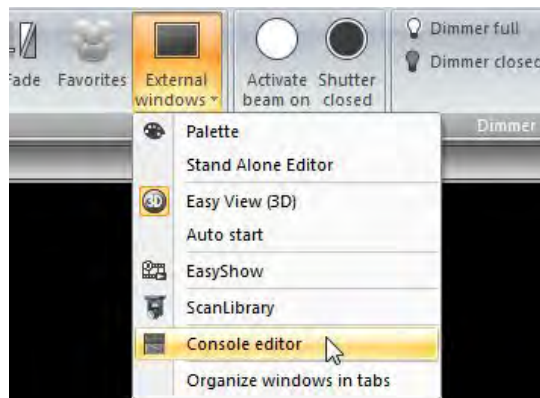


# IX Other Software

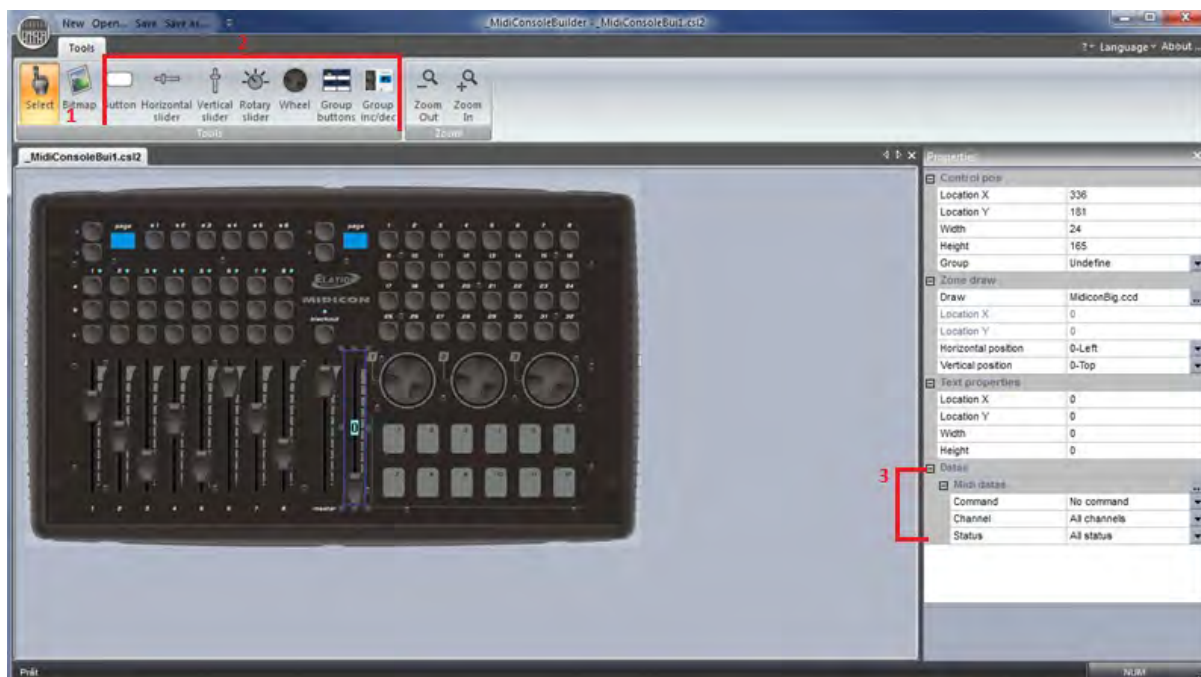
## 1. Console Editor

With the console editor, you can re-create a graphical representation of your MIDI or DMX controller with moving faders, dials and buttons. These can then be linked to almost all software features. See the Console topic for more information on using the console.

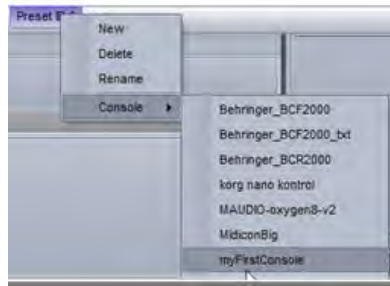
The console editor can be opened from the External Windows menu.



Click here(1) to add a background image. Make sure your image has been copied into the common->console folder inside the Sunlite Suite 2 directory. Faders, buttons and dials can be added here(2). Default MIDI and DMX assignments can be mapped here(3).



Make sure you save your console image within the console folder, it will then appear within the console selection list.

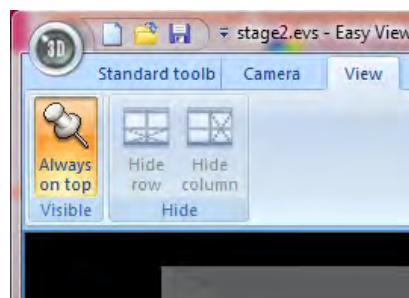


## 2. 3D Visualiser

To start the 3D visualizer, select "Easy View (3D)".



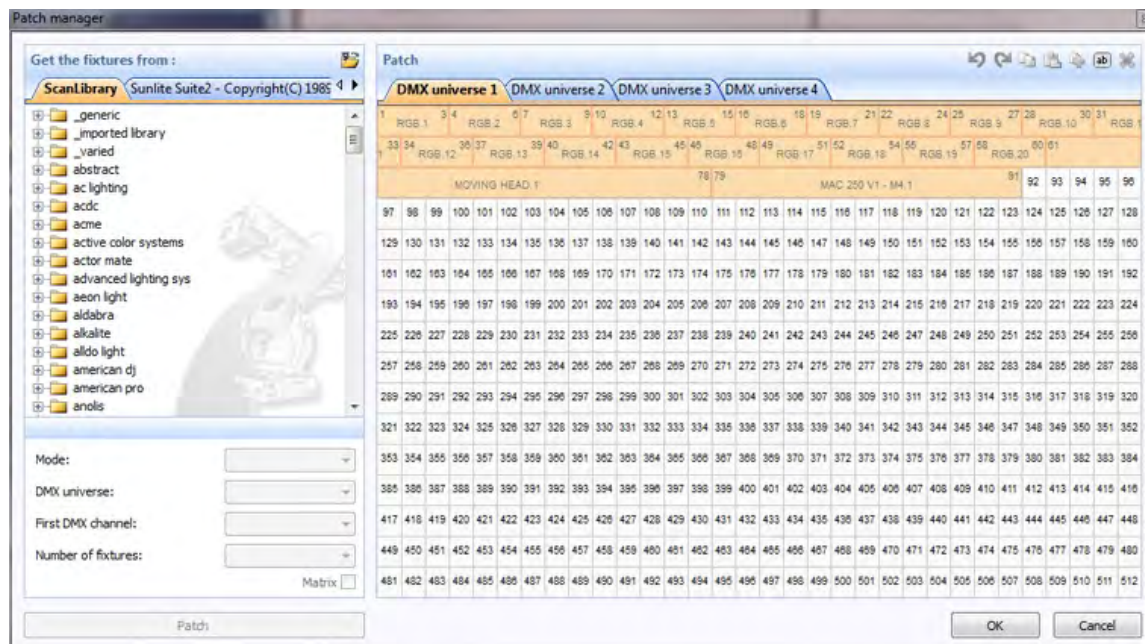
The window will appear on top of all other windows, to disable this feature, select view and click here.



The fixtures in the 3D visualizer will automatically communicate with your fixtures in Sunlite Suite 2. "Controlled by Sunlite Suite 2" is displayed at the bottom.



Sometimes you may have one DMX channel in Suite 2, controlling several fixtures in reality, for example, 1 par can channel may trigger 4 par cans. In this case you will need to patch these extra fixtures within the Visualiser.



For more information on how to use Easy View, see the Magic 3D Easy View topics

### 3. Scan Library Editor

Scan Library allows you to create your own fixture profile to use with Suite 2.

Before creating your own fixture profile, check that it has not already been created by another user, see the SSL forums by logging into your account at [www.nicolaudie.com](http://www.nicolaudie.com).

If you are editing a fixture that is already in use by Suite 2, you will need to restart Suite 2 before your changes take effect.

If you want to regenerate the pre programmed buttons after modifying a profile, you will need to re-patch the fixtures. The path window can be accessed from the page settings dialog.

Click [here](#) to open the Scan Library Editor.

